

2023

ANNUAL REPORT



New Jersey Conservation
FOUNDATION



'23 FROM OUR LEADERSHIP

In 2023, New Jersey Conservation Foundation dug into a dynamic set of goals to guide the organization's work over the next five years.



We embraced a new plan — striving to make the most of the organization's resources and capabilities to advance critical initiatives in preserving land and natural resources for the benefit of all, including future generations of New Jerseyans.

Between now and 2029, with your support, New Jersey Conservation Foundation will pursue an ambitious agenda to achieve critical conservation outcomes that center upon the following:

- **Completing at least 75 new land protection projects, directly conserving thousands of acres of land that will safeguard irreplaceable open space, green our cities, and preserve precious farmland** — and adding to the 140,000 acres protected over the past 64 years since the organization was founded. Preserved land protects and enhances the health of our native plant and animal species, and provides parks and trails for all New Jerseyans. Stewardship of these lands safeguards drinking water, mitigates the effects of climate change and air pollution, and secures farmland that supplies food for the region.
- **Passing and implementing landmark legislation to protect and enhance our state's invaluable investment in forests.** New Jersey's public forests are epicenters of the biodiversity we count on for our health and very survival. They filter our water, store carbon, cool our communities, and provide refuge for our incredible plants and wildlife. But they face significant risks and we need a new approach to ensure those values are protected and fostered into the future — especially on lands held by the public!
- **Planting 2,000 shade trees, 10 micro forests, and 10 pollinator meadow lots in Camden, Trenton and Elizabeth.** At New Jersey Conservation Foundation, we not only respect and work to preserve trees, we know they're quiet saviors in the fight against climate change and environmental degradation. And a lot more of them are needed in our cities. This work has really taken off, and we are on track to plant hundreds of trees in 2025! These plantings will advance storm water storage, neighborhood cooling, and habitat creation, while also engaging the community and empowering local tree ambassadors to care for the trees now and into the future.
- **Breaking through barriers to accelerate land preservation, and imagining a New Jersey "Green and Healthy Cities" campaign.** In addition to the land preservation projects led by NJ Conservation Foundation, we are **advocating for an ambitious overarching goal of protecting 50% of the remaining acres in the state vulnerable to development** — nearly 1 million of which are ranked highly for ecological, water, and agricultural values. If New Jersey is going to meet that goal, the pace of conservation will need to increase substantially. And that goal needs to be coupled with a major effort to advance green investments in our urban areas so that all residents can enjoy the benefits of conservation.

In 2023, because of supporters like you and with help from conservation partners, New Jersey Conservation Foundation preserved 14 properties across New Jersey, totaling 1,433 acres. We made important strides in addressing the serious problems of dwindling wildlife habitats and loss of farmland and forests, and in advancing the promise of nature for all. Thank you for your dedication to pushing forward the mission to protect our precious open spaces, and to maintain the beauty and natural capital of the Garden State. Together we will continue to make a difference!



Alison Mitchell
Co-Executive Director



Jay Watson
Co-Executive Director



Louise Wilson
Board President

JOIN US

For membership information, please visit:
njconservation.org or call 1-888-LANDSAVE

Mailing address: 170 Longview Road,
Far Hills, NJ 07931

Follow us on Facebook! @njconservation

TRUSTEES

Louise Currey Wilson
PRESIDENT

Wendy Mager
FIRST VICE PRESIDENT

Meredith Moore
SECOND VICE PRESIDENT

Finn Caspersen, Jr.
TREASURER

Jane Higgins
SECRETARY

Kenneth H. Klipstein, II
ASSISTANT SECRETARY

George N. Allport
Liping An
Kathleen Bourke
Patricia Canning
Theodore Chase Jr.
Jack Cimprich
Rosina B. Dixon, M.D.
Clement L. Fiori
James W. Hughes

William T. Knox IV
Andrew Kricun
Kevin Kuchinski
James Lyons
Frances Raymond Price
Alex Rivera
Meredith Taylor
Jennifer Williams

HONORARY TRUSTEES

Hon. Thomas H. Kean
Hon. Christine Todd Whitman

ADVISORY COUNCIL

Bradley M. Campbell
Christopher J. Daggett
Wilma Frey
John D. Hatch
Douglas H. Haynes
H. R. Hegener
Hon. Rush D. Holt
Cynthia K. Kellogg
Blair MacInnes
Thomas J. Maher
Scott McVay
David F. Moore

John Parker
Ingrid W. Reed*
L. Keith Reed
Jamie Kyte Sapoch
Leslie Sauer
Tama Matsuoka Wong

Executive Directors
Alison Mitchell
Jay Watson

*denotes deceased

OUR MISSION

New Jersey Conservation Foundation is a private, nonprofit organization whose mission is to preserve land and natural resources throughout New Jersey for the benefit of all. Through acquisition and stewardship, we protect strategic lands from the Highlands to the Pine Barrens to the Delaware Bayshore. We promote strong land conservation policies at the local, state and federal levels, forge partnerships to achieve conservation goals, and provide support and technical assistance to partner groups. Since 1960, we have helped protect more than 140,000 acres of natural areas, farms, parks and water resources.

ON THE COVER

Row 1: Bobcat - Tyler Christensen; Great egret - Penelope Ayers; Monarch on goldenrod - Bill Lynch

Row 2: Cedar waxwing on pepperbush - Ann Bender; Eastern box turtle - Bill Lynch;

Cownose stingrays - Lisa Ann Fanning; Hermit thrush - Marie Sheraden; Bottlenose dolphins - Lisa Ann Fanning

Row 3: Red-tailed hawk - Geo Fellema; Mayapples - Julie Gause; Baltimore oriole - Preeti Desai; Trout lily - Julie Gause

Wolf Spider by Ryan Francis Curry



BIODIVERSITY

... is more than shorthand for the variety of life on Earth, from bacteria to bald eagles, plants to people.

It's something we rely on to survive. Without a natural world that is complex, resilient, and full of variety, we wouldn't have clean air or water. Our food supply would dry up. And biodiversity is in trouble across the planet. The causes are many; all are incredibly consequential. In the pages ahead, a look at New Jersey's biodiversity and how it affects us all.

WEIRD

(and wonderful)

New Jersey

Life here in the most densely populated state in the nation is abundant. Some of that abundance, thriving in our forests and swamps, our fields and meadows, is pretty odd! Check out this handful of weird and wonderful species that speak to the miracle of biodiversity here in New Jersey.



CARNIVOROUS PLANTS

Like the legendary Jersey Devil, a mythical flying biped said to lurk in the Pine Barrens, bladderworts, pitcher plants, and sundews – also residents of the Pine Barrens – have an appetite for meat. Instead of earning themselves a menacing reputation for raiding chicken coops and farms, though, these plants eat bugs.

Bladderworts – flowering, slender plants that dine on tiny aquatic creatures like mosquito larvae and water fleas by capturing them underwater and sucking them into vault-like structures called “bladders” – are especially adept; they’re the fastest known carnivorous plants in the world.

Pitcher plants and sundews hunt their prey differently. Pitcher plants drown their insects in leaves shaped like pitchers that collect rainwater. Bugs, attracted by the plants’ nectar, fall in and can’t escape. Sundews, meanwhile, are more like flypaper: their leaves are covered in stalks slicked with a sticky dew that captures insects. Once the stalks close around the victim, the plant starts digesting.

WASP MANTIDFLY

Sightings of the tiny wasp mantidfly are uncommon, but these little critters are airborne in our suburbs. The insect’s weirdness is strictly skin (or membrane) deep, resembling a mixed bag of body parts from different insects: wasp, praying mantis, and fly.

CRANEFLY ORCHID

Found in moist, deciduous forests around the state – including NJ Conservation Foundation’s Burden Hill Forest Preserve and Evert Nature Trail – the cranefly orchid displays a weird characteristic: It produces a single, dark green leaf in autumn on the forest floor. That leaf functions through winter and decomposes in early spring. In late summer, the orchid’s tiny, brownish flowers bloom on a leafless stalk and are pollinated by moths.

“STRAWBERRY” BUSH

American Strawberry Bush is a native woody shrub that has declined due to deer browsing. It can be grown easily in protected gardens, and is still found naturally in a streamside forest within a New Jersey Conservation Foundation easement in Salem County. The bush provides oil-rich berries for birds, but beware. Its bark, leaves, and berries are poisonous to humans and can cause severe diarrhea and even cardiac arrest.

FIERCE FUNGI

Nina Burghardt, who arranges monthly fungal forays as a board member of the New Jersey Mycological Association, sometimes comes across hedgehog mushrooms in her travels. Instead of gills or pores on the underside of their caps, she said, they have short, vertically hanging “teeth.”

Diaz Puffballs, found in New Jersey Conservation Foundation’s Franklin Parker Preserve, are a fungi often referred to as dog’s turd, Burghardt said. Instead of messing up your shoes when you step on them, though, they demonstrate their weirdness by displaying what she calls spore-holding “pimples” when cut open at the base.

Devil’s tooth fungus, one more species that demonstrates the breadth of New Jersey’s odder species, is sometimes called the bleeding tooth fungus. Emile DeVito, Ph.D., manager of science and stewardship at New Jersey Conservation Foundation, said it looks like a raspberry cheese Danish. But you won’t find it at any bakery – not one that passed a recent health inspection, anyway. Instead you’ll find it where we find so much of the curious splendor that surrounds us: in the damp, dark forests of New Jersey.



Pictured right top to bottom:
Cranefly orchid by Matt Jones
Bladderwort consuming mite by Keara Giannotti
Devil's tooth fungus by Bill Lynch

Earth is *THE ONLY* planet with **BIODIVERSITY**

**Protecting
ecosystems
is absolutely
essential**



Preserving biodiversity is not simply about restoring ecosystems or conserving future economic opportunities. We further our humanity as we care for our families, gardens, neighborhoods, forests, and streams. Being able to foster life beyond our species is a great gift to humanity and an obligation we must embrace.

Consider the humble American chaffseed, a perennial in the snapdragon family: Not long ago, its existence in New Jersey was limited to a cluster along a Pine Barrens roadside, vulnerable to wayward cars, road salt, mowing and herbicides. Fortunately, researchers, led by a Rutgers graduate student who landed a part-time job monitoring the endangered plants, didn't give up on efforts to revive it. Chaffseed is still on the endangered list. And Jay Kelly, the one-time graduate student – now a biology professor at Raritan Valley Community College – is still nurturing the species back from the brink, in part by planting chaffseed at Franklin Parker Preserve. “I'm grateful for the chance to keep doing it,” he said.

Kelly and scientists like him don't work to help dwindling plant and animal species thrive because those species will one day bring them glory or riches. An investment in seeing life flourish in all its variations, from majestic bald eagles to sodden clumps of moss, is its own reward.

Emile DeVito, Ph.D., the manager of science and stewardship at New Jersey Conservation Foundation, thinks of it this way: “We definitely are a better society when we protect, enhance, and restore rare species, even if the rare species has no specific benefit to humans other than us knowing of its subtle beauty and existence,” he said.

The web of life is complex. Some species have been intertwined by co-evolution, and they need each other to survive, such as certain pollinators and wildflowers. Other species regulate ecosystems, such as wolves in the west keeping large herbivores at low levels, allowing riparian woodlands to regenerate and stabilize eroding riverbanks. But many obscure species play no special role in ecosystem regulation and may not even support the existence of other species. Some species, especially diminutive rare plants like Chaffseed, may just be there because they work in an ecosystem dominated by wildfire.

By protecting and preserving our state's diverse ecosystems, we honor our ethical obligations to other living beings, future generations, and the natural world. We follow an instinct to respect and care for the Earth and all its inhabitants.



“Getting to watch these seedlings come up and flourish is the thanks I'm getting. And that's all the thanks I need.”

— Jay Kelly

The **NATURE** of New Jersey's cities

New Jersey has it all! From Cape May Point to High Point - miles and miles of sandy beaches along the Atlantic coast, unique forested woodlands in our Pine Barrens, Highlands and Sourlands; globally important migratory stopovers for birds and butterflies along our Delaware Bayshore - we marvel at its diversity.



The most densely developed state in our nation is also home to many cities and developed communities that make up the beautiful mosaic of this place.

And while there is generally good access to our important public suburban and rural open spaces, many more ‘green investments’ must continue to be made in cities throughout the State. Our city residents – people, plants, and wildlife – benefit from a diversity of landscapes even in the built environment. Urban parks, small forest parcels, tree lined streets, streambanks and vacant lots all support biodiversity.

When people lack access to that biodiversity, it can affect their health and well-being.

In addition to supporting a wonderful array of wildlife, our trees and plants filter pollutants from the air, reducing the negative effects of respiratory conditions like asthma and allergies. Parks and urban greenways get people moving, encouraging the kinds of physical activities that help reduce the risk of chronic diseases like obesity, heart disease, and diabetes. A Jersey City resident who spends quality time exploring the salt marshes and meadows of Liberty State Park, for example, might notice benefits to their mental health – natural settings within urban areas provide a calming, anxiety-abating respite from the built environment. These benefits are clear and science has documented their value.

Creating and enhancing green spaces in cities also guarantees accessible places for recreation and civic engagement. These areas lend themselves to events built on traditions and practices that reinforce a sense of belonging and shared purpose.

Parks, nature trails, and wildlife observation sites also open doors for learning about ecology and sustainability, perhaps our best tool for cultivating and nurturing a conservation ethic among young people.

That conservation ethic can help counter the effects of climate change in our most densely populated settings. Unless we invest more in greening our cities, the urban heat island effect – where buildings, roads, and other infrastructure absorb and re-emit the sun’s heat – will continue, unabated in future years, making cities even hotter. New Jersey Conservation Foundation is working with partner organizations and community members to plant thousands of trees in Trenton, Camden, and Elizabeth to help combat this problem.

We need more greenspaces to absorb the increased runoff and flooding we are already experiencing. Even noise pollution in cities will be amplified if we don’t make a commitment to growing and maintaining greenspaces, because vegetation acts as a sound barrier.

Our lives get richer when we invest in urban biodiversity. From the smallest organisms like bacteria and fungi in our soils to the teeming life in our waterways, urban forests and along our streets; all of it creates a wonderful and diverse tapestry of existence.



New Jersey:

The

BIODIVERSITY

State

The fifth-smallest state in the country squeezes an incredible variety of both cold-adapted northern and warm-adapted southern species into a tiny area.

From the rugged hiking trails of Ramapo Mountain to the rare bird sightings that bring binocular-toting watchers to Cape May, we're a state whose natural beauty draws visitors. Tourism is a multi-billion dollar industry here, the New Jersey Division of Travel and Tourism says, thanks in large part to our nature-based attractions. Our lakes and shores are magnets for bluefish and bass anglers as well as families packing floaties and sunscreen. The popularity of our recreational sites attracts businesses. With those businesses come jobs.

For a hands-on look at another way biodiversity in New Jersey makes your life better, take a road trip to any of the state's pick-your-own farms. Without a constellation of pollinators, including bees and butterflies, we wouldn't have local farmers' markets or flats of strawberries to fill in summer or pumpkin patches to roam come fall.

Many NJ food crops for people require pollinators, but those crops occupy a relatively small acreage compared to the grains and grasses grown for animal feed. Almost all soybeans and corn are genetically modified to be Roundup ready, so virtually nothing else survives in those thousands of acres across the state. Hay requires far less fertilizer, pesticide, and herbicide treatment, and is plowed infrequently so as not to lose soil to erosion, but has few benefits to native biodiversity.

Ultimately, a switch to regenerative agriculture with healthy, living soil that stores water and carbon is essential to retaining pollinators, storing CO₂, reducing flooding, and ameliorating the threats posed by climate change. Sustainable, low-chemical agricultural landscapes are key to rescuing the American kestrel from its decline due to a chemical intensive agricultural landscape. NJ Conservation Foundation is working to protect and bolster this endangered falcon in the Wickecheoke Creek Greenway Preserve by shifting to more responsible agricultural practices that support healthy biodiversity.



Investments in biodiversity protection and restoration are investments in prosperity. The restoration of natural habitats is critical to our quality of life – and it helps the State's economy flourish.



OUR SUCCESS DEPENDS ON OUR DONORS

Thank you to all who contributed in 2023

\$100,000 AND ABOVE

Anonymous Donors
F. M. Kirby Foundation
The Nature Conservancy of New Jersey
Open Space Institute
The William Penn Foundation

\$50,000-\$99,999

Building Decarbonization Coalition
CTW Foundation, Inc.
The Fund for New Jersey
The Henry and Marilyn Taub Foundation
Maine Community Foundation
Silent Maid 1924
Victoria Foundation, Inc.

\$25,000-\$49,999

Anonymous Donor
Arthur Kontos Foundation, Inc.
Currey Wilson Family Fund
Richard and Rosina B. Dixon
Foodshed Alliance
Heat Pump Nation
Pamela and Howard Hirsch
The Jacqueline Asplundh Family Fund
James and Virginia Welch Foundation
Johanette Wallerstein Institute
Johnson & Johnson Matching Gifts Program
Scott and Hella McVay
Joan Rehnitz
Reed Family Foundation, Recommended by L. Keith and Lisa Reed
Stone Foundation of New Jersey
Mayor Paul H. Tomasko
Mary Walter

\$10,000-\$24,999

Anonymous Donors
Philip D. and Elisabeth F. Allen
Chris and Kelly Atwell
Kathleen and Ted Bourke
Finn and Emily Caspersen
CEP Renewables, LLC
Conklin Family Fund
The Curtis W. McGraw Foundation
The DeBevoise Calello Family Fund
Gordon and Llura Gund Fund of the Princeton Area Community Foundation
The Griffin-Cole Fund
Harris Family Fund of the Princeton Area Community Foundation
Helen & William Mazer Foundation
Kenneth H. and Lee Klipstein, II
William T. Knox, IV
Samuel W. and Karen Lambert
The Luckow Family Foundation, Inc.
Mary Owen Borden Memorial Foundation
Miranda Fund of the Community Foundation of New Jersey
Meredith Moore and Steve Rabbe
National Audubon Society
The Nature Conservancy
Eric D. Paternoster
Pockets - A Family Foundation
Reed Family Foundation, Recommended by John S. and Leslie V. Reed
Rockefeller Family Fund
Roxiticus Foundation
Sycamore Fund of the Princeton Area Community Foundation
Union Foundation
Winifred M. and George P. Pitkin Foundation, Inc.
Forwood C. Wiser and Katherine L. Adams
Michele W. Wu



Mountain Laurel by Rob Ferber

\$5,000-\$9,999

Anonymous Donors
Acorn Foundation
George N. and Grania Allport
Alex and Carolyn Ashby
Atlantic Shores Offshore Wind
Franta J. Broulik
Thomas A. and Barbara Brummer
Theodore and Victory Chase
Church & Dwight Co., Inc.
Jack R. Cimprich and Ronnie E. Cimprich, VMD
Delaware River Greenway Partnership
Duke Farms Foundation
E.J. Grassmann Trust
Clem and Joanna S. Fiori
Fox Foundation
Austin T. and Gwen Fragomen
The Frelinghuysen Foundation
Glenmede Trust Company, NA
Neil Grossman and Nancy Wolff
Helen H. Haines
Gates H. and Mary Ellen Hawn
Jane and Tom Higgins
James W. and Connie O. Hughes
The Hyde and Watson Foundation
Jane and Peter Galetto Charitable Fund of the Community Foundation of New Jersey
Larry Rockefeller Fund
Joseph and Jennifer Lemond

Richard and Vivian Lewis
Eric Monberg and Wendy Mager
The Maggie and Michael Delia Foundation
Richard Moseley and Joanne Gusweiler
Kurt Munkacs and Nancy Jeffries
National Wildlife Federation
Natural Lands Trust, Inc.
New Jersey League of Conservation Voters
Oye and Judy Olukotun
Ashleigh and Juls Palmer
Parkside Business & Community In Partnership, Inc.
David Rago and Suzanne Perrault
Janice Reid
Rosemont Foundation
Jeffrey and Mary Louise Shafer
The William L. Gibson Fund of the Community Foundation of New Jersey

\$2,500-\$4,999

1919 Investment Counsel, LLC
Anonymous Donors
American Farmland Trust
Bank of America Charitable Foundation
Employee Giving Program
Christina and James Besanceney
The Bob and Barbara Wolfe Charitable Fund
Roger Byrom and Wendy Rasmussen

Lisa C. Caplan
Frances Carter
The Charles E. and Edna T. Brundage Foundation
Citizens Against the Pipeline Elliott Cohen
DeCotiis, Fitzpatrick, Cole & Giblin
Dean C. and Elizabeth Durling Wilma E. Frey
The Gelfand Family Foundation, Inc.
Stephen C. Gruber
Samuel M. Hamill
William H. and Leita Hamill
Thomas B. and Archer Harvey
Hopewell Presbyterian Church
The Howard Bayne Fund
Dawn A. Howell
Peter W. Jewell
John L. and Karen Kemmerer
Karen E Kohler Charitable Foundation
Dan and Gail Kopp
Jim Lyons and Jennifer Palmieri
The Merrill G. & Emita Hastings Foundation
Sally Mikkelsen
New Jersey Licensed Site Remediation Professionals Association
Notaboard Fund
Nelson Obus and Eve Coulson
Tari Pantaleo
John F. and Maja Parker
Margaret H. Parker
Paul Dackow Giving Fund
Paul Von der Heyden Foundation
PSEG
Timothy C. Riegert
Ferrill and Belinda Roll
Dana and Steven Saporta
Stark & Stark
Hunt and Margaret Stockwell
Jacqueline Strigl
Walton Family Foundation
Harold P. and Joannah Wilmerding
Winsor-Delap Family Fund
Bo Xing and Aili Liu

\$1,000-\$2,499

Richard and Julia Allen
The Always Fine Fund
Liping An
Arthur J. Gallagher Risk Management Services, LLC
Alexi Assmus and Robert Dodge
Alix and Scott Bacon
Christopher Barr and Patricia Shanley
Bassett Foundation
Robert and Pamela Becker
Peter A. and Helena Bienstock
Barbara and W. M. Blumenthal
John and Rosanne Bornholdt
James C. and Anne L. Brady
Robert D. Broege
Camden Lutheran Housing, Inc.
Campbell-Hackl Family Fund
David L. Hansen and Ruth Charnes
Chris M. Chickering
Barbara Coe and Joe Highland
Robert J. and Nancy Cole
Gray Connaughton Family
Unni Cooper
Thomas and Brenda Curnin
Curtis and Sophie Glover Family Foundation
Michael Dawson and Robert P. Tomaselli
Linda de Castro
John P. de Neufville
Anne DeBevoise
Edward and Jessica Deutsch
EarthShare of New Jersey
Lynn and Tom Ebeling
Jeanne R. Eisele
Suzanne Engel
Ernest Christian Klipstein Foundation
Jack and Carol Falcone
Michael J. Faul, Jr.
Fred and Gael Gardner Fund of the Princeton Area Community Foundation
Elizabeth Garcia
Garden Club of Morristown
Bruce M. Gast
Alexandra W. Gerry
Rick Nordling and Veronica Goldberg
Lynda R. Goldschein
GTB Partners

Ryan Harster
Chris Harwell
Healey Family Foundation
Gary Hinesley and Margery Clare
James A. & Sharon Schwarz
Donor Advised Fund of the Jewish Community Foundation of Greater MetroWest NJ
Karen Janiszewski
Barratt and Jennifer Jaruzelski
Drs. Neill and Julia Johnson
David Jones
Landon and Sarah Jones
Dr. Stephanie B. Jones
Stephen Phillips and Candace L. Jones
Kanner & Whiteley, LLC
The Kaufelt Family Fund
Edward and Margaret Kelly
Harold Kiel
Alessandra H. Kingsford
The Koven Foundation
Kuchinski Family Giving Fund
Steven C. Kunder
Sarah Lambert
Brian and Joanna Leddin
Gary Len and Nell T. Jackson
Leslie Jones Foundation
Liebhaber/Cooke Giving Fund
Jeffrey and Anita H. Liebman
Karen Linder
Louis G. Piancone Charitable Foundation
Louis March, Jr.
The Hon. Joseph H. Metelski
Kenneth Meyers
Robert B. and Veronica F. Mitchell
Vanessa F. Mitchell
Daniel E. and Janet G. Murnick
The Neu Foundation of California
Harry and Lynn O'Mealia
The Ogden Fund at The Summit Foundation
Millicent L. Palmer
Joanne Pannone
Stephen and Elizabeth Parker
Michael and Juliet Patsalos-Fox
Frank and Trudy Patterson
Penny and Ted Thomas Fund of the Princeton Area Community Foundation
Edward and Carol L. Pfeiffer

Kathryn A. Porter
Charles Rappaport and Valerie B. Ackerman
Anthony and Glorianne Robbi
The Robert A. and Carla Lee Lewis Charitable Gift Fund
Robert McLean Foundation Trust
Gregory and Carol L. Romano
Michael E. and Deirdre H. Rothpletz
Rush Holt & Margaret Lancefield
Fund of the Princeton Area Community Foundation
Sandra Simpson Charitable Fund
The Schad Family
Thomas and Leslie Schorr
Nancy Z. Schreyer
Bruce and Sara Schundler
Patricia Shanley and Christopher Barr
Solar Landscape
Peter R. and Abigail E. Sorge
Sumner Gerard Foundation
Thompson and Susan Swayne
Nancy A. Swift
Taft Communications
John and Mary M. Tassini
Meredith Taylor
Teetsel & Jacobs Charitable Fund, a Donor Advised Fund of U.S. Charitable Gift Trust
Charles K. Thompson

Kathi and John A. Thonet
Upstream Alliance
Curtis and Ann P. Viebranz
John and Debra Watson
James and Barbara Webb
Larry Wehr
Barry Weshnak
Charles F. and Carole A. West
Joseph B. and Phoebe Wiley
Louise L. Wilkens
Anne Williams
William deCamp Jr. Fund of the Community Foundation of New Jersey
Robert W. and Elizabeth S. Wilson
William A. and Elizabeth W. Wolfe

\$500-\$999

William Amann
Joyce W. and J. S. Andrew
Catherine Bacon
Balwierczak Charitable Fund
Pamela and Kenneth Barroway
Roberta G. Bennett
Bruce J. and Barbara Berger
Andrew Bernal
Bohren and Bohren Associates, Inc.

Richard J. and Harriet Bonuccelli
Lavinia Boxill
Broadridge Financial Solutions
Jennifer Bryson
Bubb Family Fund
Michele S. Byers
Charles M. and Jeanie T. Chapin
Joseph S. and Jeannie Colalillo
Richard H. Colby
The Cole Family Charitable Fund at Schwab Charitable
Mark and Cynthia Coleman
Cornerstone Financial Group
David B. Cronheim
Cummings Giving Fund
Michael Cumpsty
Brenda Curnin
John L. and Margo Dana
Michael and Marilyn R. Dee
Robert and Katharine Denby
William Doan, III
Susan Dorward
Bhavini Doshi
Timothy and Jennifer Duggan
Eisenberg, Gold & Agrawal, P.C.
Danforth and Deborah Ely
Mark and Lucy Engebretson
Chana R. Fitton and William A. Timpson
Robert L. Foester
Deborah S. Freedman and Avram Paradise
The Hon. Rodney P. Frelinghuysen
Garden Club of Princeton
Aristides and Elizabeth Georgantas
James G. and Kathleen Gilbert
Greener by Design
Haas Family Fund
John D. Hatch and David Henderson
Daniel and Helen Haughton
Peter D. Haugk
Joe Highland
Joseph L. Hulseman and Frances T. Spann
Michael Hurst
Robyn Jeney
Robert and Florence Jennes
Martin Judd
Rex A. Parker and Carol M. Kleis
Elizabeth P. Kohn



Grasshopper by Geo Fellema

STAFF

Alison Mitchell, *Co-Executive Director*
John S. Watson Jr., *Co-Executive Director*
Erica Arles, *Land Program & Stewardship Program Coordinator*
Alix Bacon, *Project Manager, Sustainable Agriculture*
Mark Barrick, *Information Technology / Office Manager*
Tim Brill, *Regional Manager Central Jersey*
Rebekah Buczynski, *Project Manager, North Jersey Stewardship*
Elise Cavicchi, *Land Protection Coordinator*
Nicole Ceballos, *Development Associate*
Beth Davisson, *Highlands & Black River Acquisition Specialist*
Emile DeVito, Ph.D., *Manager of Science & Stewardship*
Richard Dodds, *Regional Manager, Black River Greenway, Highlands, & Wickecheoke Greenway*
Jessica Fasano, *Communications Manager*
Geo Fellema, *Development Manager*
Robert Ferber, *Regional Manager, Delaware Bay Watershed*
Jane Gardner, *Policy & Development Assistant*
Jane Halsted, CPA, *Accounting Manager*
Amy Hansen, *Policy Manager*
Maria Hauser, *Director Human Resources / Board Liaison*
Jalisa Hernandez, *Urban Parks Coordinator*
Bo Humphrey, *Director of Development & Major Gifts*
Steven Jack, *Land Steward, South Jersey*
Russell Juelg, *Senior Land Steward*
Bill Lynch, M.S., *Director of Engagement & Communications*
Tammy LaGorce, *Staff Writer*
Lisa MacCollum, *Director, North & Central Jersey*
Melanie Mason, *Land Steward*
Timothy Morris, *Director of Stewardship*
Tanya Nolte, *Conservation Information & GIS Manager*
Rudisha Okezie, *Regional Manager, Camden Area*
Allison Pieffer, *Stewardship Coordinator*
Martin Rapp, *Project Coordinator, North Jersey Stewardship*
Elizabeth Reyes, *Cut Flower Production Manager*
Karen Richards, CPA, *Director of Finance & Administration*
Heidi Roldan, *Corporate & Foundation Relations Manager*
Bill Scullion, *Land Steward, South Jersey*

Sybil B. Kramer
 William Kurtz
 Elizabeth Lacey
 David A. Landy
 William Lawlor, III
 Mary and Charles Leck
 Mark Leuchten
 The Losam Fund
 Marty and Lisa MacCollum
 Karen Malzone
 Margaret Griffin & Scott Sillars Fund of the Princeton Area Community Foundation
 Alexander Mateus
 McKay Family FFCG of the Fund for Charitable Giving
 Alison Mitchell and Chris Keep
 Liza and Schuyler Morehouse
 Rob Myre
 Elizabeth Nef
 Jayne O'Connor
 Henry S. Patterson, III
 The Peck-Bernet Fund
 Edmund W. Peters
 Dave and Lynne Petronella
 Theodore S. and Elizabeth A. Peyton
 PF and GM George Charitable Fund
 Edward C. and Carol L. Pfeiffer
 Dionne Polk
 Gregory Puchalski
 Ingrid W. Reed
 R. David Reynolds
 Keith and Anita Richmond
 Ritter Family Fund
 Anthony and Glorianne Robbi
 Mr. and Mrs. Joseph E. Romano
 Ronald Berlin Architect, PC
 Megan Ruffe
 Patrick Rulon-Miller
 Lou Ruprecht
 Ryan Scobey Fund
 Richard Schatzman and Debra Pawa
 Douglas M. Schleifer and Maureen M. Smyth
 Robert and Elizabeth Schmid
 Brett Shaver
 The Short Hills Garden Club
 Benjamin Solum
 Claus P. and Helge Speth
 Alan and Arlene Spotnitz
 Austin C. and Ann Starkey
 Michael Steigerwald
 Martha Steinberg
 Swiftwater Foundation

Anne Troop
 Barbara H. Trought
 Robert K. Ward
 Heidi Wendel
 Jennifer Williams
 Peter and Ruth Williams
 Edith K. and Thomas Williams
 Stewart Winter and Joseph Saba
 Wrobel Family Gifting Fund
 Brann and Ellen Wry
 Beth Yingling
 Lawrence J. Zambrowski
 Gary Zockoll and Karen A. Richards

\$250-\$499

Thelma K. Achenbach
 ADP Foundation
 Frederick H. and Judith A. Allen
 John P. Alvarado
 Jefferson T. and Laura Barnes
 Scott Barnes
 Kerry Barringer and Rosetta D. Arrigo
 Nancy Bassett
 Randy Baum
 Nancy H. Becker
 Christie Behot
 Evan Bender
 Pat B. Black and Carol W. English
 Grosvenor and Elizabeth F. Blair
 Aaron Bobrove
 Ingeborg D. Bossert
 Paul C. Brangs
 Jean W. Cahouet
 Calvin R. Carver, Jr. and Anne DeLaney
 John Casadia
 Michael F. Catania and Jan Rosenfeld
 Ann Cavanaugh
 Richard and Sally K. Chrisman
 Bob Cole Family Fund
 Colgate-Palmolive
 The Hon. Geoffrey M. Connor
 John J. and Jesse Connor
 John Costo
 Mary Croft
 Tom Kreutz and Liz Cutler-Kreutz
 Daiichi Sankyo, Inc.
 Sari DeCesare
 Delaware Nature Society
 Dell Technologies
 Jignasa Desai-McCleary
 Douglas Dixon
 Dobson Family Fund of the Princeton Area Community Foundation
 Richard and Jill S. Dodds
 Katherine V. Dresdner, Esq.
 Richard and Norma Edom
 Eric Ewbank
 Diane S. Falk
 Nicholas and Kristin Fiori
 Melodie Flatt
 Jason-Michael Flintosh
 Noel K. Foley
 Anne Forbes
 William W. and Constance D. Fortenbaugh
 Mary T. Foster
 Keith and Joan Freehauf
 Garden Club of Englewood
 Anne and William Gates
 Jon K. and Evalyn B. Gelhaus
 Antoine and Noemie Gerschel
 Tom Gilbert and Erin O'Donnell-Gilbert
 Pete Gitlitz
 Stephen A. and Virginia S. Goldman
 Frank W. and Joan Goodhart
 Gorrie Family Foundation
 Adam S. Grace and Lisanne L. Renner
 Barbara Geenhalgh-Weidman
 Greenview Ecology Fund
 Michael Gross
 Louise Gross
 Henry R. and Doris J. Gutschuth
 Haddonfield Memorial High School
 Thomas B. and Constance S. Halliwell
 Oliver Hamill and Kate Webb
 Amy Hansen and Mark Canright
 Roger and Friederike C. Harris
 Robert C. and Sarah B. Hemsen
 The Herskowitz-Staples Charitable Fund
 Megan Hnath-Brown
 The Home Depot Foundation
 Robert K. and Lucille Hornby
 Mark Huddell and Kerry L. Miller
 Robert H. and Maryann D. Isham
 Carol Johnson
 Henry Jonas and Tricia Deering
 Kenneth N. Kavulia
 Joseph Kazimierczyk
 Marjorie Kienle
 George and Bernadette Koenig
 Lawrence Koplik and Sarah Roberts



Baltimore checkerspot by Bill Lynch

Alan and Donna L. Kunze
Steven E. Lane
Susan W. and Donald E. Lauffer
William M. Little
Joseph Logan
William and Julie T. Lupatkin
Susan L. Lupow
Andrew and Gemma Major
Giving
Ronald Manning
Martens Bash Foundation
Matthew Martin
Ellen G. McConnell
Sharlynn McGonigal and
Robert B. Spille
James and
Karen L. McGregor
John B. and Linda McMackin
Peter and Jane Mercer
Merck Partnership for Giving
Denise and Andrew Milot
Herman Morchel
Jeff and Barbara Morgan
Wilhelmina B. Moyer
New Agency Partners
Susan A. Newberry
Alfred Olivi
John and Sara Olsen
Cynthia L. Paladino
Stephen Petross
Joy R. Petzinger
Brendan and Fran Phair
Shelden O. Pisani
David Piscitelli

Elyse Pivnick
Adam S. Potkay
Carole Rains
John and Paula Runnells
Amy Ryan
Nadine and Louis Sapirman
Eric and Miranda M. Scher
Anne Stephano
Janice A. Summers
Alexandra Tatnall
Christopher J. Teasdale
Leigh Walker and Alice S.
Tempel
Allan Terres
Thomas and Elizabeth Kelsey
Fund
John Thurber and Constance
Cloonan
Louise Tompkins
John R. and Barbara S. Vadnaiz
Daniel and Janet Van Abs
Jeffrey D. Vernam
William C. Ward, Jr.
Aaron Watson
The Hon. Christine T. Whitman

\$100-\$249

Anonymous Donors
Ronald E. Adams
Julie O. and Frederick B. Akers

Alan D. & Charlotte B. Moors
Giving Fund
Christine Alber
DeWitt Alexandre
Mary Allen
Charles Allen
Stella Joy Allen
William W. and Joyce H. Allen
Frank and Janet D. Allocca
Florence Aluotto
Mary Amici
Nels P. Anderson
Salvatore Angemi
John H. Anlian, Esq.
Jennifer Aponte
Steven A. Armbruster
Andrea Autry
Kevin J. Avery
James and Lana Ayers
Deborah W. Bailey
Vishal Balani
Patricia A. Balko
James Bark and Denise
Erickson
Patricia Barner
Jim and Carolyn Barnshaw
Nancy F. Barrett
Marjorie A. Barrett
Robert L. Barrett
Rocquel Barretto
Jacquelyn Barth
Norman Basch
Tracey Basista

Constance Bauder
Bayer
Fredric Bell and Pauline
Thomas
Jules A. and Carol W. Bellisio
Sidney Bembridge
Jack R. Benintende
Greg Bennett
Al Bentley
Jorge H. and Mary A. Berkowitz
Alice F. Berman
Thomas Besselman
Robert J. Billera
Thomas and
Joanne Binting
Veronica L. Bishop
Alan and Susan Blanchette
Raymond M. and
Patricia I. Blinn
Martin M. and Anne M.
Bloomenthal
BNY Mellon Community
Partnership
Janet E. Bone
Mary Anne Borge and Jeff
Worthington
Dwayne Botnick
Phillip and Florence Boulden
Robert and Amanda Boulton
Charles K. Bowman, Jr.
Marlene J. Boyd
James E. and
Beth B. Branigan
Elizabeth Breedlove
Robert S. and Valerie E.
Brewster
Tim and Wendy Brill
Bristol-Myers Squibb
Foundation, Inc.
Edward P. Bromley, III and
Dawn M. Reitz-Bromley
Alfred and Lorraine Brown
S. G. and Sara C. Brummer
Pat Brundage
Joseph and Terese Buchanan
Scott Buchheit and Pamela
Perry
John R. Bulger
Virginia K. Bunnell
Joseph Burgiel
Joseph Calvet
Ann E. Campbell
Walter R. and Anita S.
Campbell
Milton Cannan

Christine Cannon
Amanda Carlson
Phil and Carol G. Carlson
Evelyn Carter
Larry L. Carter
Gladys A. Case
Edward Casson
Ralph Celebre and Susan
Haase
Arlene Ceterski
Donald Chambers
Clement Chang
Robert Chernow
Mr. and Mrs. Kenneth J.
Christensen
Michele Christina
Joseph Cimiluca
Wendy W. Clarke
William J. and Elizabeth E.
Clarkson
Edward Cleary
Kyle Coates
Larry J. and Mary Coffey
Diane M. Coffman
Lori Cohen
Comcast Corporation
Emilie W. Corbin
Edward P. Coxey
Crum & Forster Insurance
Thomas Cuff
Nancy Cunningham
Kate Curley
James L. and Susan C. Currie
Michele Daniels
W. Bruce Daniels
Joel L. Deitz and Barbara A.
Berko
Pamela DeLosSantos
Alexis Demitroff
Franklyn H. Dennis
Dave and Jeanne DePodwin
Caroline DeVan
Scott Dieman
John Donahue
Ethan DuBois
Harry A. and Elisabeth Dugger
Willard Dye
Michael J. and Patricia
Dziamba
Douglas S. and Priscilla Eakeley
Landis Eaton
George Eckelmann and Jane
Engel
Van P. and Lynda M. Eckes

Stephen Elliott
Eva Endahl
Kurt and Deborah Engelmann
David C. Epler
Gerald Faber
Fahey Charitable Giving Fund
Jeffrey Faigle
Hutchinson K. and Pamela M.
Fairman
Ray Falls
Rita S. Fand
Lawrence R. and Phyllis Fast
Steven Fenster
Laraine Fergenson
Nancy Fezell
June and Edward Filipski
Joseph S. Filo and Anne Dyjak
Daniel and Margery Fiori
William Fitts and Blake Cook
Roger E. Flahive and Eileen A.
Mallor
Roberta Fleischman
Jared and Emily Flesher
Florance Family Fund
Randolph Floyd
James J. Flynn, Jr. and Sue
Johnson
William D. Foelsch
Lisa Franco
R J Franzoi
Dave Frederick
Charles Fresolone
Maxine Friedman
Friends of Liberty State Park
Katherine Fritts
Paul Funk
Russell Furnari
Barbara Fusco
Deborah and Russell Galen
Michael F. Gallaway
Judith Gardner
Audrey Gates
Keara Giannotti
Carol Gillesberg
James Gillick and Margaret
Wong
Richard A. and Elisabeth
Ginman
Judith Glassgold
Lillian Gola
William Goodman and Rebecca
J. Goldberg
Joseph and Toni Goldfarb
Joel and Carole Goldstein

Charles C. and Mary M. Goodfellow
 Roe W. Goodman
 Abigail Gormley
 John F. Gorski
 Charles R. and Laurel M. Gould
 Richard Gouldrey
 David N. Rubin and Melanie E. Gray
 Barbara E. Greenstein
 Edgar L. and Diane Griffith
 Danny M. Grundel
 Ann Guarino
 Barbara Haertlein
 Jason Hafstad
 Dennis F. and Nancy E. Hahon
 Elyse K. Halloran
 Timothy Hand
 John D. Hankin, Jr. and Samantha Rothman
 Margaret E. Harmsen
 Jacquelyn and Richard Hartley
 Eric Hausmann
 Diana Haywood
 Elizabeth D. Healy
 Neill Heath and James J. Hone
 Hellstern Family Fund

Jennifer Helm
 Robert D. Hendler
 Carolyn Heuser
 Lee W. Himmelmann
 Doug and Janice C. Hiple
 Lorraine Hoak
 Hollace A. Hoffman
 Robert A. and Tracy J. Hofstrom Esq.
 Robert F. and Diane Holtaway
 Hood Family Fund
 Robert M. Hornby
 Bob Hoyt
 Thomas and Gloria Huey
 Howard Huff
 Thomas and Katherine Hunt
 Sally Ike
 Robert H. and Lora A. Ingling
 Kevin Inman
 John H. and Carol Jackson
 Alice Jackson
 Brian T. Jaeger
 Scalla Jakso
 Daniel L. Jassby
 Michael Jeske
 Sigmond Johnson

Joka Vandenbergh and Jim Phillips Fund
 Robert Jonas
 Penny and Tom Jones
 Nancy and Joe Jones
 Andrea and Dennis Kahn
 Seth D. Kantor
 Susan Karibjanian
 Dr. Andrew E. Kasper, Jr.
 Sande Katz
 Stanley N. and Adria H. Katz
 Michael Kaufman
 Michael F. Keady
 Elizabeth A. Keat
 Steve and Margaret Kehs
 Nick Keller
 Linda C. Kelly
 Steven Kemp
 Ryan Kennedy
 Gerald Kerns and Susan Eckler-Kerns
 Matthew W. Kester
 Christoph M. and Flora G. Kimmich
 Richard and Christine Kitto
 Kenneth Klacik
 Charles J. Klein
 Ann W. Klemme
 Michael M. Knox and Barbara J. Bristow
 Beth Kovacs
 Susan Koval
 Steven B. Krakauer
 Gary and Heide Krakauer
 Deborah Kratzer
 Andrew Kricun
 Rudolph F. and Ruth M. Lalak
 Jerome A. Langer
 Theresa Joy Lanuto
 Andrew Laporte
 Cindy Lawlor
 David Laycock and Susan Godoy
 Elvera Leader
 Andrew Leary
 Thomas Lederer
 Valerie Ann Leeds and Kevin Knotts
 Bryan Lees and Paula Whitlock
 Andrea E. Lehman
 Marie Leithauser
 Will E. and Mary D. Leland
 Clark A. and Virginia M. Lennon

Brian Lestini
 Jay Levenson
 John B. and Barbara T. Lewis
 Thomas Leyden
 Barbara Liati
 Mark S. Lerner and Carol B. Lipman
 Samuel A. and Judith G. Livingston
 Carolyn LLOYD-Turbett
 Nicholas and Laura Lochetta
 Robert A. and Naomi Lonergan
 Brian Long
 Rosina Lozano
 Lublin-Rojer Family
 James M. Lukenda and Maura C. Lockhart and Family
 Jack and Mary E. MacConnell
 Peter Macholdt and Kathy Fedorko
 Kenneth L. MacRitchie
 Donna Madison
 Richard L. Magovern
 Kim Maialetti
 Cathy Malizio and Barry Faulkner
 Alexandra A. Manning
 Joseph J. and Claudette A. Maraziti
 Laura Marchetti
 Valerie F. Marks
 Nada Martini
 Steven E. Martino and Karen P. Fox-Martino
 Master Gardeners of Mercer County
 Susan Matson
 Mark Mayer
 Robert E. McAllan
 Emma McArdle
 Robert C. McClanahan, Jr.
 Francesca McClay
 Patrice J. McCoy
 Elizabeth G. McCutcheon
 Tom and Ellen Measday
 Douglas A. Meckel and Susan Michniewski
 Lynn B. Mellor
 Irene Mendelson
 John I. Merritt, III
 Cynthia Merwin
 Margaret Middaugh
 Kristen Middleton
 Danya Miller
 Gayle Miner

Richard and Lorraine C. Mnich
 Cynthia Montes
 Carleton K. Montgomery and Sarah E. Rosenson
 Katherine Moore
 David F. Moore
 Christopher E. Moore
 James E. Morgan
 Timothy J. Morris
 Joann O. Munn
 Dominic Mustillo
 Walter Nahadil, Jr.
 Pam Naprstek
 Suzanne Nash
 Beth and Ray Nichols
 Isabelle A. Nieves
 William and Judy Ninke
 Novartis Pharmaceuticals Corporation
 Ruth F. Nunez
 Alex O'Briant
 Janice W. O'Connell
 Thomas Ogren and Karen Taylor-Ogren
 John Olivo
 Elizabeth Olson
 Patricia Orlatti
 Peter T. Ostberg
 Valerie Palluzzi
 Lori Pantaleo
 Allan Papp
 John and Marie Parisi
 Heather Partis
 Arny Patel
 Douglas and Mary Ann Pease
 Eric J. Pedersen
 Kathleen Pellicane
 Mark Pensiero
 Thomas Petruzzello
 James and Linda Pierro
 Carolyn Polisano
 Sandra J. Polk
 Edward Pikus and Lisa J. Pollak
 Marc and Kelly Popp
 Jill Porter
 Joan E. Post
 Kate Pourshariati
 Natalie Powell
 Joseph L. Prati
 Jennifer Presidente
 Frances L. Preston
 Roger T. Prichard and Astrid M. Caruso

SanDee Priser
 Hilary Prouty
 George A. and Pamela Y. Pruitt
 Todd and Carol Pulley
 Andrew Quirk
 Alexandra Radbil
 Paula Raimondo
 Rake & Hoe Garden Club, Inc., of Westfield, NJ
 Joann and Arlindo S. Ramos
 Martin J. Rapp
 C. Denise Regensburg
 Gerda E. Reimer
 Barbara Repsher
 Barbara A. Rich
 The Richard R. Howe Foundation
 Barbara Richards
 Cidnie J. Richards
 John Ringel and Judith Bebout
 Riverton Fire Co., Inc.
 Janet Robbins and Gary Woodward
 Benjamin P. Rochat
 Carol Rockafellow
 Alan Rojer and Ellen Relkin
 David Rojer and Jennifer Lublin
 Harriet L. Rola
 Anne-Marie Romano
 Barbara T. Ross
 Davida & Martin Ross
 Daniel and Susan Ryan
 Carl D. and Jill L. Sammarco
 John and Susan D. Samtak
 Denise Sandy
 The Sanford and Karen Brown Charitable Fund
 The Sarah and Jackie McCarron Memorial Fund
 Laraine Sauer
 Bruce and Christine C. Savage
 Reeve and Georgia T. Schley
 Brian Schmolt and Barbara Goun
 Betsy J. Schnorr
 Judith Schoenherr
 Susan Schwirck
 Anthony J. and Roseann Scilletti
 Keith A Seager
 Norma Semple
 John Sharkey
 Rozalyn Sherman



Pickerings Morning Glory by Tom Halliwell

James A. and Eileen S. Shissias
Bettie Shrensel
Lynn Sichel
Donald R. and Lynn L. Siebert
Rhyne and Andraya Simpson
Gary N. and Shary M. Skoloff
John Skrypak
Gus and Kathleen Slotman
Wayne and Antonia Smith
Susan M. Smith
Mary E. Smith
Leslie Smith
Thomas P. Smith
David Snope
Judith Snow
James M. and Aimee L. Sousa
Conni Spiegle
Aimee Spinillo
Logan Stafford
Josey Stamm
Scott D. Stanford
Edward C. Stavenick
Vera C. Stek
Robert E. Stewart
David M. Stewart
Carl F. and Sally L. Stillwell
Gail Stock
Janet Stoothoff
Eric and Grete Straube
Henry and Rebecca Strub
Robert and Deborah Sussna
Russell and Lois B. Swanson
Gerard A. Sweeney and Lisa A. Aruffo
Daniel D. Sweeney
Mark Szutarski
Dean B. Talcott
Jayne L. Tanis
Jonathan R. Tarlin
TataBob Charitable Foundation
Chris and Maureen Tauber
Rebecca Taylor
Ethel S. and Donald Terhune
Terhune Orchards
Pam Thier and
Deborah Saunderson
Roger Thorpe and Clair Ransom
Joan M. Thuebel
Patrick Tobin
Juli Towell
Lan-Jen Tsai
Eric and Geraldine Turnquist

William H. and Annette Tyler
Tom Unger
Verna P. Urbanski
Louise F. and David Usechak
Shaun C. Van Doren
John Van Schoick
John R. and Arianna Vig
Charlotte P. Visbeck
Lauren Vitagliano
Scott Vizioli
Al and Jacqueline M. Vnencak
Jon von Briesen
Joseph and Carolyn M. von Meister
Robert and Sheila Von Zumbusch
Carol R. Wade
William H. and Andrea B. Wallace
Joan F. Walsh
Joan and Gary Warner
William A. Watson
Robin E. Watson
Susan A. and David C. Watts
Sara Webb and Chip Woodbury
Fred Weber
Dieter Weissenrieder
Corinne Welsh
Caron Wendell
Eric H. Westerwick
Mary Claire White
William M. Whitman
Gloria Wilczynski
Daniel B. Wilkinson and
Katherine M. Dixon
William C. Sweeney Family Fund
William Boyce Lum Charitable Fund
of the Jewish Communal Fund
Craig Williams
John and Pamela Williams
Nancy Williams
Harry and Diana Wind
Thomas and M. Christine Winmill
Alan C. Wolfersberger
Women's Club of Merchantville
Elsa W. Wood
Shirley A. Wunsch
Susan E. Wydick
Bradford Young
Dorothy Zajac
Matthew E. Zambrowski
Geraldine Zelenick
Arlene Zielinski

\$50-\$99

Anonymous Donors
Adirondack Mountain Club - North
Jersey Ramapo Chapter
Deborah J. Anderson
Mark Andrews
Andrew S. and Caroline Armstrong
Brooke Artesi
Sara Ascalon
Wilhelm D. Auer
Edward W. and Lillian M.
Babson
Thomas and Mary Bailey
David P. and Nancy J. Bailin
Judy Balaban
Basking Ridge Garden
Club
Richard E. and Connie
Batherman
Marijean Battistella
Debra Becker
Ann Bender
Susan Bennett
William J. Benson
June Bente
Robert G. and Nancy Benz
Fred and Patricia Berghahn
Gregory Bernet
Daniel A. and Sheldia L. Bernstein
Susan A. Bernstein
Katherine M. Biles
Richard M. Blake, Jr.
Lorraine Blazewicz
Robert Blumberg
Joan and Alan Bocchino
Frank A. Bodnar
Heather Ann Bonarrigo
Robert Bond
Joan P. Bowman
Jeanne M. Boyle
Michael J. Brady and Laurie R.
Gneiding
Harry Bratty
Richard Braun
David Brook
Octavia Brown
Peter A. and Elaine Buchsbaum
Melanie Burdorf
Nancy Burke
Kevin Burkman
Michael J. Burns
Robert and Carol L. Butera
Deborah C. Butler



DONOR SPOTLIGHT

Friend and supporter Penelope Ayers showcased her incredible wildlife photography at the Somerset Hills Art Collective. All proceeds from images sold - \$2,700 in total - were donated to New Jersey Conservation Foundation to help us continue our work across the state. In the image above, a great egret and a gull fight over their next meal. Thank you, Penelope!



Samuel W. Lambert III was honored at our 2023 gala in recognition of his land preservation efforts in the New Jersey Pine Barrens. Among them is the preservation of the incomparable Franklin Parker Preserve.

“Sam Lambert is a true conservation champion, and his leadership was absolutely crucial to buying this property and preserving it as an unspoiled gem,” said Alison Mitchell, co-executive director. “Twenty years later, we thank Sam again for all he has done for New Jersey Conservation Foundation, and for everyone who loves the beauty of the Pine Barrens.”



1. James Webb, Oye Olukotun, Hannah Wilson, Jackie Fay, Cliff Wilson
2. Judy Olukotun, Dr. Margaret “Annie” Lancefield, former Representative Rush Holt, former Governor Thomas H. Kean 3. Emile DeVito, the Jersey Devil, Michele Byers

- Anthony Cacciapuoti
- Ralph R. and Martine M. Calder
- Meryl Carmel
- Elizabeth G. Carpenter
- Theodore J. Chando
- Jeffrey Charney
- Mary Beth Charters
- Minty Chien
- Gail A. Chmura
- Daniel D. and Patricia J. Chukurov
- Thomas Cichalski
- Cigna Foundation
- Kathryn Clancy
- Robert A. and Debra Clark
- Thomas E. Clark
- Robert L. Clayton
- Diane Close
- Susan Closson
- Robert Colella
- David and Donna M. Collins
- Chris R. and Sue F. Collins
- Robert D. Conley
- Sarah Connelly
- Timothy Connery
- Michael Conzo
- Justine Cook
- Robert E. and Mary F. Cooley
- Corinne Costa
- Richard Costabile and Randall Wilcox
- Robert D. and Barbara R. Costello
- Gregory W. Cowper
- Anthony Cracchiolo
- Marilyn W. Crane
- Barry and Ruth Cranmer
- Lynn Cremona
- Charles W. Croom
- Shirley Culman
- Harry Danner
- Martha C. Davis
- Susan Dazzo
- Peter De Rose, Jr.
- Sandra Dean
- Larry and Connie Deetz
- James and Michele DePietro
- John J. and Nancy L. Derrico
- Lynne and Eric Derwid
- Michael and Mary P. DeVito
- John and Joan I. Dighton
- Nelson W. and Carolyn Dittmar
- Yuliana Dominguez
- Meghan Doody
- Andrew V. Dorko
- John Doyle
- Thomas and Donna Drewes
- J. Michael Dulin
- Russell and Joan Durbin
- Jean Earle
- Gayle E. Eddy
- Dino and Victoria Eftychiou
- Ellen and Alan Pearl Charitable Fund
- Diane Emerson
- Charles G. and Eleanor E. Engel
- Robert and Rita Erickson
- Patricia N. and Mark Esch
- Karen and Jim Eubank
- Katrina Eugenia
- Ellen Ewing
- Lawrence Fallon
- Philip and Cleo Federico
- David and Phyllis Feinblum
- Andrew H. Felder
- Eileen Ferrer
- Betty A. Fetzner
- Eric Fidoten
- Steve Fiedler
- William G. and Kristine Fischer
- Ruth U. Fischl
- Marilyn S. Fishman
- Scott Flanegin
- Julia Flath
- Richard S. Flint
- Don Florio
- Stephen G. Fogle
- Carol and Tom Foster
- John J. Franzini
- Sheldon Freidenreich
- Rebecca French-Mesch
- Tom Friel
- Thomas and Joyce Fritz
- Lucien O. Frohling
- Karen Fucito
- Carol and Phil Fuoco
- Gerald Garfinkle
- Gerard Geisler
- Elizabeth Gensel
- George and Kimiko Yuzawa Legacy Fund
- Bull and Karen Gervasi
- Sherry Gilroy
- Emily Ginder
- Michael J. and Barbara A. Gliddon
- Amy L. Golden
- John Gordon
- Dennis Gray and Lena Jonsson
- Daniel and Ruth K. Green
- Barbara Greif
- William Gross



Octopus stinkhorn by Bill Lynch

Marietta L. Guertler
Joseph N. and Maryanne M. Guterl
Carl H. and Carol S. Haag
David H. Hall
Joanne Hall
Lonnie B. and Bette Hanauer
Justin Hannah
Hansen Giving Fund
Noreen Harten
George and Lucy M. Heller
Philip M. Heyman
Christine M. Hill
Ann Hoffenberg
Jon Holcombe
Deirdre Hoover
Margaret T. Horan
Stephen N. Howard
John Hughes
Deborah Hullings
Joan Hullings
Kathleen M. Hurley
Geraldine E. Husth
Hugh M. Hyde, Jr.
Jack Imperato
Interstate Hiking Club
Barry D. Isanuk
Michael Jacob
Ken Jacobson
Patricia Janiszewski
Mark Jay
Robin Jess
Andrew W. Johnson
Calvin N. Jones
James Jordan

Gayatri Joshi
Roger and Barbara Justis
David F. Kaiser
Jay Kalyanaraman
Kevin and Melanie Kavanaugh
Jason D. and Karen D. Kelleher
Anna Kenderes
Richard Kennedy
Kim & Sara Ketchel
Ketling Family DAF
Carol Kirschenmann
Ellen Kirwin
Frank R. Klapinski and Kristina E. Hicks
Carol M. and Larry Klevans
Mark C. Kneec
Timothy A. Knotts and Beth H. Weston-Knotts
Lingard Knutson
Susan Kogan
Ann Kolumban
Elaine Korzeniowski
Ruth Kram
Roy and Louise Kreiser
Carolyn J. Krickus
Peter Kroll
Daniel J. Kroon
Jeffrey M. and Arlene C. Laderman
John Langan, Jr.
Ingeborg Langer
John A. and Catherine T. Langley
Rocky L. and Janet N. Larson
Laurie Larson
Marlene K. Larson

Linda LaRusso
Deirdre Lawrence
Howard and Susan Lefkowitz
Richard Leister
Russel C. and Tatyana Like
Brendan Linard
Linda and Warren Linke
Cate and James M. Litvack
Janet S. Loengard
Diane Louie
David Lusk
Karen MacNaul
Carol Maloney
Mary and Michael Manley
Susan L. Marple
Timothy M. and Katharine Martin
Raymond A. Martinetti
Lili Martinez
Gretchen Martus-Uray
Ann Mason
Maria Mastrobuono
Heather McBride Leef
Suzanne B. McCarthy
James McClure
Peter R. McCrohan
B. Alan McDermott
Stephen J. McGeady
Peter McGrath
J.G. and M.J. McIntosh
Nicole McIntyre
Jane McRory
Susan Mead
Lawrence Melamed
Mary Beth and Bruce Michael

Charles J. and Kristina K. Miller
Patricia Miller
Thomas E. Moorhouse
Elisabeth Morgan
Christy Morganstein
Karen Moriarty
Marilyn G. Morsheuser
Frank Gordon and Sara Jane Myers
Clive D. Needham
Leslie Nicholson
John F. O'Grady
Ms. Gretchen Oberfranc
Shoshana Osofsky
Gordon J. Ostrum
Antoinette Outwater
Colleen Parker
Emmett M. Partain, III
Judith Passmore
Paula Pennisi
Christina L. Pennoyer
Bob and Karen Pepsis Jr.
Frances Perlman
Mary A. Peterson
Kathryn R. Pierro
Mackenzie Piggott
PK Environmental
Gerald J. and Susan Post
William R. and Noreen M. Postman
Roland S. Pott
Debra Price
Dave E. and Kate J. Pritchard
Kim Rahner
Carol Raposo
Karen D. Rappaport
Kristin Redmond
Scott Rekant
Gregory Riccardi
Jens Riedel
Jane Rigney
Laura Roake
Judith K. Robinson
Leslie Roche
Lise Rode
James H. and Debra A. Rokosny
Rebecca Rome
James L. and Judith M. Rosenthal
Patrice M. Rossettie
Kim Rowe and Patrick Barton
Eleanor Rowe

Robert Roy
James and Linda Ruocco
Susan Rupprecht
Allan and Ellen C. Ryan
Michael E. Saks and Suzanne H. Woll
Brian Sanchez
Elizabeth Sands
Valerie Sands
Amanda Santomenna
Randy and Janet M. Santoro
Michael D. and Maureen Santoro
Barbara B. Sayres
Terry L. Schmidt
David A Schoenberg
Paul and Amy Shottland
Jeffrey Schroeder
Samuel Schwartz
Karen Schwing
David Sciarra
Michael D. Selender
April Sese
Michael P. Shakarjian
Suzanne L. Shannon
Steve Sharp
Gerard L. and Dorothy J. Sherry
Robert and Cynthia Shull
Stanley Shur and Elizabeth J. Rosenthal
Stephanie S. Siegfried
Al Smith
Stephen T. Smith
Allan D. and Gail L. Smith
Nancy K. Socha
Patricia Sofron and John Herrling
Sony Music
Marcella Tony Sosnoskie
Kevin Sparkman
Dana Sparling Donahue
Carol Spillane-Mueller
Jane Spindel
Judith Stabile
Lois K. Stewart
Andrew Strauss
Deborah Stuart
Alan Stultz
Tanya Sulikowski
Clay C. Sutton and Patricia Taylor Sutton
J. Frederick Swan

SYW Giving Fund
Penelope Taylor-Wallace
Edward J. and Kathy Tenthoff
Janet Terchek
Christiann Thompson
Thomas Thompson
Susan Thress
Bonnie Tillery
Jeanne C. Toal
Jeffrey and Becky Tober
John Tozzi
William E. and Cynthia M. Treene
Elie Porter Trubert
Arthur Tuchfeld
Cheryl T. Uhlig
Laurence R. and Margaret Van Meter
John L. Varga
Walter A. Veit
Roger Vellekamp
John Violette
Matthew L. and Lisa Visco
Allan and Edith Vogt
John Volpa
Anna M. and Benedikt Voordeckers
Gertrude Vrana
Robert and Linda Walden
Dave Walker
Thomas C. Wallace
Anne E. Wallwork
Richard and Audrey Warwinsky
Janet Webekind
Andrea Weinsheimer
Dr. and Mrs. David Weinstein
David B. and Elsa Weinstein
Joan T. Weiss
Rosanne M. Weiss
Tom Wells and Nancy Goodman
Charles West
Donald Widmyer
Charles P. Williams
Michael S. Wills and Agnes M. Toccket
Anthony S. and Brynhild Wiseman
Penelope Witt
Patrick H. and Leslie D. Wood
Noah Yaskulka
Marian G. Young

INDIVIDUAL SUPPORT FOR 10+ YEARS (UP TO \$49)

Michael and Alison Baker ✓
 Stephen D. and
 Maria A. Beguin ✓
 JoAnn Bowman ✓
 Francis V. and
 Eleanor B. Budney ✓
 John F. Cantilli ✓
 Patricia N. Fowler ✓
 Bryan K. and
 Kay E. Hannigan ✓
 Robert and Caroline Kanner ✓
 Philip and
 Charlotte Lo Buono ✓
 Mary Elizabeth Parkhurst ✓
 Joseph P. and
 Shirley A. Rennon ✓
 Paul Riley ✓
 Patricia Rolston ✓
 Ronald V. and Lisa D. Smith ✓
 Janet R. Sneed ✓
 Warren Sobelsohn ✓
 Town & Country Garden
 Club ✓
 Daniel T. Wall ✓
 Wendy and
 MacDonald Walsh ✓

DONORS IN-KIND

Odd Bird Brewing
 Robert Scully
 ShopRite of Hunterdon
 County

GALA GIFTS IN HONOR OF SAM LAMBERT and the 20th Anniversary of the Franklin Parker Preserve

1919 Investment Counsel, LLC
 Stella Joy Allen
 George N. and Grania Allport ✓
 Liping An
 Arthur J. Gallagher Risk
 Management Services, LLC
 Atlantic Shores Offshore Wind
 Nancy Bassett
 Roberta G. Bennett
 Peter A. and Helena Bienstock
 Barbara and W. M. Blumenthal
 The Bob and Barbara Wolfe
 Charitable Fund
 Bohren and Bohren Associates,
 Inc.
 Kathleen and Ted Bourke
 Lavinia Boxill
 Robert D. Broege
 Jennifer Bryson
 Michele S. Byers ✓
 Roger Byrom and Wendy
 Rasmussen ✓
 Finn and Emily Caspersen
 CEP Renewables, LLC
 Theodore and Victory Chase ✓
 Jack R. Cimprich and Ronnie E.
 Cimprich, VMD ✓
 Barbara Coe and Joe Highland
 Elliott Cohen
 Erica and JP Colace
 Cornerstone Financial Group
 Michael Cumpsty
 Brenda Curnin
 James L. and Susan C. Currie
 Currey Wilson Family Fund ✓
 The Curtis W. McGraw
 Foundation ✓
 John L. and Margo Dana ✓
 Michael Dawson and Robert P.
 Tomaselli
 John P. de Neufville
 DeCotiis, Fitzpatrick, Gibling,
 and Cole
 Robert and Katharine Denby
 Edward and Jessica Deutsch
 Richard and Rosina B. Dixon ✓
 Richard and Jill S. Dodds
 Bhavini Doshi
 Timothy and Jennifer Duggan
 Dean C. and Elizabeth Durling
 Eisenberg, Gold & Agrawal, P.C.
 Danforth and Deborah Ely

Mark and Lucy Engebretson
 Jack and Carol Falcone
 Elizabeth Garcia
 Aristides and Elizabeth
 Georgantas
 Glenmede Trust Company, NA
 Goldman Sachs & Company ✓
 Gordon and Llura Gund
 Fund of the Princeton Area
 Community Foundation
 Greener by Design
 Neil Grossman and Nancy
 Wolff
 GTB Partners
 Samuel M. Hamill
 William H. and Leita Hamill
 John D. Hankin, Jr. and
 Samantha Rothman
 Amy Hansen and
 Mark Canright ✓
 Thomas B. and
 Archer Harvey ✓
 Daniel and Helen Haughton
 Gates H. and
 Mary Ellen Hawn ✓
 Herold Law, P.A.
 Jane and Tom Higgins
 Joe Highland
 Pamela and Howard Hirsch ✓
 James W. and Connie O.
 Hughes
 Michael Hurst
 The Jacqueline Asplundh
 Family Fund
 David Jones

Landon and Sarah Jones
 Kenneth H. and Lee Klipstein
 Sarah Lambert
 Samuel W. and Karen Lambert
 Brian and Joanna Leddin
 Jim Lyons and Jennifer Palmieri
 The Maggie and Michael Delia
 Foundation
 Scott and Hella McVay ✓
 The Merrill G. & Erita Hastings
 Foundation ✓
 Wendy Mager and Eric
 Monberg ✓
 Carleton K. Montgomery and
 Sarah E. Rosenson
 Liza and Schuyler Morehouse
 Richard Moseley and
 Joanne Gusweiler
 Daniel E. and
 Janet G. Murnick ✓
 New Agency Partners
 Notaboat Fund
 Nelson Obus and Eve Coulson
 Oye and Judy Olukotun
 Harry and Lynn O'Mealia
 Open Space Institute
 John F. and Maja Parker
 Margaret H. Parker ✓
 Frank and Trudy Patterson
 Julia Pettit
 Theodore S. and Elizabeth A.
 Peyton
 PSEG ✓
 Andrew Quirk
 Joan Rechnitz

Ingrid W. Reed
 Ferrill and Belinda Roll
 Rosemont Foundation
 Roxiticus Foundation
 Patrick Rulon-Miller
 Lou Ruprecht
 Dana and Steven Saporta
 Reeve and Georgia T. Schley
 Thomas and Leslie Schorr
 Jeffrey and Mary Louise Shafer ✓
 Patricia Shanley and
 Christopher Barr
 Brett Shaver
 Silent Maid 1924
 Solar Landscape
 Stark & Stark
 Austin C. and Ann Starkey
 Hunt and Margaret Stockwell ✓
 Taft Communications
 Alexandra Tatnall
 Mayor Paul H. Tomasko
 Curtis and Ann P. Viebranz
 Mary Walter
 James and Barbara Webb
 The Hon. Christine T. Whitman
 Louise L. Wilkens
 Jennifer Williams
 Peter and Ruth Williams
 Anne Williams
 Harold P. and Joannah
 Wilmerding ✓
 Gary Zockoll and
 Karen A. Richards ✓



Rainbow Hill at Sourland Mountain Preserve by Mark Barrick

2023 INTERN HELPS DEVELOP NEW TRAILS

With generous support from the Garden Club of Morristown, New Jersey Conservation Foundation welcomed intern **Alex Nayfeld**, a current Rutgers University student studying Human Ecology at the School of Biological and Environmental Sciences. Alex assisted with the implementation of a 12-mile hiking trail system throughout the 1,150-acre Rainbow Hill at Sourland Mountain Preserve. Alex's work focused on ensuring that the trail system benefits natural resources and the people who visit the preserve.

ESTATES

Estate of Joanne Elliott*
Estate of Maureen Ogden*

IN MEMORY OF

Richardson Buist
Jean Buist Earle ✓
Katherine DiGiuseppe
Dawn Lapham
Pete Evert
Karen Schwing
Debra Becker
Lorraine Blazewicz
Philip and Florence Boulden
Nancy Burke
Nancy Cascioli
Donald Chambers
Heather Corbett
Karen and Jim Eubank
Carol and Phil Fuoco
Mike and Pam Hawes
Jack Imperato
Ken Jacobson
Karen Janiszewski
Patricia Janiszewski
Nancy and Joe Jones
Steven Kemp
Kim and Sara Ketchel
Carol Kirschenmann
Elizabeth Lacey
Cathy Malizio and
Barry Faulkner
Gayle Miner
Thomas E. Moorhouse
Elizabeth Nef
Janice W. O'Connell
Barbara Repsher
Riverton Fire Co., Inc.
Carol Rockafellow
Mr. Robert C Roy
Norma Semple
Marcella Tony Sosnoskie
Susan Thress
Mary Therese Weimert
Shirley A. Wunsch
Charles 'Chuck' Flatt II
Melodie Flatt
Sarah Connelly
Cynthia Fuller
Hester Fuller
Frank R. Gardner

Carol and Jack Bernstein
Tom Friel
Tracey Basista
Davida and Martin Ross
Mary Jo Glaser
Stephanie Zucker
Elizabeth D. Healy
Michele S. Byers ✓
Alison Mitchell and
Chris Keep ✓
Pamela Hirsch
Michele S. Byers ✓
Alison Mitchell and
Chris Keep ✓
Janet Marsh Hunt
Thomas and Katherine
Hunt
Joan G. Hassard
Patricia Miller
Gary Introne
Don Florio
Marion Evelyn Jones Kingsford
Alessandra H. Kingsford
Margaret Dillon
Brendan Linard
Mary and Michael Manley
Thomas and M. Christine
Winmill
Ruth Margaret Krajewski
Karen Malzone
Daniel Levenson
Jay Levenson
Edward Lloyd
Judith Glassgold
Alison Mitchell and Chris
Keep ✓
David Weaver Moore
Verna P. Urbanski
John Pier Munn III*
Joann Munn
Mary Moore
Chana R. Fitton and William
A. Timpson
Ryan Stuart
Deborah Stuart
James T. Snow
Judith Snow
Teresa R. Stahl
Anthony and Glorianne
Robbi ✓
Tort Redmond
Kristin Redmond
Jeff Van Varick
Alex O'Briant

Hal Wachtel
Pamela and
Howard Hirsch ✓
Jim Wyse
Gerald Faber
Ken Washington
Stephen Behrens
Mark Kevin Wynn
Deborah J. Anderson
Andrew Laporte
Robert Wolfe
Susan W. Lauffer and
Donald E. Lauffer
Barbara B. Wolfe

IN HONOR OF

Avalokitesvara
Ronald Manning ✓
Penelope Ayers
Paul and Amy Schottland
Michele Byers
Ruth Charnes and
David Hansen ✓
Michael Dawson and
Robert Tomaselli
Katherine V. Dresdner, Esq.
Michael F. Gallaway ✓
Berkeley Heights
Environmental Commission
Richard Leister
Patrick Brunetti
Stewart Winter and
Joseph Saba
Gary Borkes
Jean Buist Earle ✓
Rebekah Buczynski
Judith Glassgold
Clients of Ronald Berlin
Architect, PC.
Ronald Berlin Architect, PC ✓
Emile DeVito
Marlene Boyd ✓
Michael and Marilyn Dee
Susan Dorward
Mark Pensiero
Eileen Ferrer
Beryl Doyle
Lois K. Stewart ✓
Timothy Duggan
Alison Mitchell and
Chris Keep ✓
Clem Fiori ✓
Daniel and Margery Fiori
William Flemer
Louise Gross
Frances
Katherine Russo
Tom Gilbert
Susan Dorward
James and Barbara Webb
Hanssler & Bossert families
Dr. Ingeborg D. Bossert
Gates and Mary Ellen Hawn ✓
Mark and Cynthia Coleman
Pamela Hirsch ✓
Meryl Carmel
Barbara Hullings
Donna Cannestro
Gerard Geisler
Deborah Hullings
Joan Hullings
William Matulewicz
Brian Long
Mom and Dad
Jack Segal
New Jersey Conservation
Foundation
Robert J. Jonas
The Pikes
Andrew Kozakowski
Edward C. Pfeiffer ✓
Carol L. Pfeiffer ✓
Philippa Reist
Estate of John J. Fitzpatrick
John Sacco
George Eckelmann and
Jane Engel
Sofia
Gayatri Joshi
Shirley Troha
Eleanor Rowe
Lori Volpe
Christine Cannon
Jay Watson
Ray Falls
Friends of Liberty State
Park
Mary and Charles Leck
John Thurber and
Constance Cloonan
The Wedding of Carol Krupa
and Dietrich Diecke
Herman Morchel

Anne Wright Wilson
Marjorie Kienle
Richard Wheeler
Mackenzie Piggott
Barbara Webb
Landon and Sarah Jones
David Yaskulka
Noah Yaskulka



DON'T SEE YOUR NAME? LET US KNOW!

Those who donated in 2024 will be included in next year's annual report, so stay tuned!

Share your thoughts and questions with Bo Humprey, Director of Development & Major Gifts, at bo.humprey@njconservation.org.



BURLINGTON COUNTY

RANCOCAS CRANBERRY CO. II

185 acres, Southampton Township

Nearly 200 acres of a cranberry farm dating back over 90 years in the Pine Barrens was permanently preserved as open space. Preservation of this property protects water quality and wetland habitat for critical species, and greatly enhances outdoor recreational opportunities in the area. The property has been part of the Mehler family cranberry farm for generations. Family member Craig Mehler continues to grow cranberries at the Rancocas Cranberry Company, which encompasses 33 acres of active cranberry bogs adjacent to the new preserve. Funding for NJ Conservation's purchase of the land came from the New Jersey Department of Environmental Protection's Green Acres Program, Open Space Institute, Pinelands Preservation Alliance, and a U.S. Fish and Wildlife Service North American Wetlands Conservation Act grant. Ducks Unlimited, Inc. also contributed toward the costs associated with acquiring the property.

UNITED TALMUDICAL ACADEMY TORAH OF LAKEWOOD

697 acres, Woodland Township

Our Michael Huber Prairie Warbler Preserve in the Pine Barrens has grown 50 percent larger, thanks to the acquisition of an adjacent 697-acre former cranberry farm. NJ Conservation purchased the property from the United Talmudical Academy Torah of Lakewood (UTA), which had received the land as a donation nearly six years earlier. The addition of the UTA property increases the size of NJ Conservation's Michael Huber Prairie Warbler Preserve from 1,227 to 1,918 acres. The

property is crossed by several tributaries of the Burrs Mill Brook, and contains approximately 65 acres of mature Atlantic white cedar. The property also provides connectivity to large swaths of protected land and likely habitat for threatened and endangered species, and is of the highest importance for protecting water quality, with 8.6 miles of streams and 29 acres of open water. Funding for the purchase came from the New Jersey Department of Environmental Protection's Green Acres Program, Open Space Institute, and a U.S. Fish and Wildlife Service North American Wetlands Conservation Act – Ducks Unlimited grant.

CUMBERLAND COUNTY

CAMPBELL, 6 ACRES AND ERICKSEN, 10 ACRES

Maurice River Township

Surrounded by the New Jersey Department of Environmental Protection Division of Fish and Wildlife's Heislerville Wildlife Management Area, the NJ Conservation Campbell and Ericksen properties were transferred in 2023 to the State of New Jersey's Department of Environmental Protection. The protection of these properties in the 1990s added to the Maurice River Greenway. The Maurice River and three of its tributaries were designated as Wild and Scenic Rivers by the US Congress in 1993. Natural resource values of the properties include the Atlantic Flyway, pristine habitats that sustain rare species and provide crucial food and resting areas for migratory birds, waterfowl, and fish. The Maurice River is also the second largest tributary of the Delaware Bayshore, an ecosystem of national and international importance.

14 PROJECTS - 1,433 ACRES PRESERVED

- ★ NJ Conservation Owned: 971 acres (Fee or Easement)
- ▲ Preserved in Partnership: 462 acres
- Transfers: 53 acres
- Urban Action

● NJ Conservation Foundation Owned & Managed Properties (Fee or Easement)

■ Preserved Land (Open Space & Farmland)



While great care is taken to present the most up to date information, NJ Conservation Foundation does not assume responsibility for spatial accuracy or timeliness of underlying data. This map is not a survey and should be used for planning purposes only. NJ Conservation Foundation expressly disclaims any and all responsibility for errors, omission or other inconsistencies depicted, arising from otherwise related to this map product.

URBAN ACTION

New Jersey Conservation Foundation kicked off a major tree planting initiative we're leading in Trenton to promote tree equity in neighborhoods and increase shade for residents, while also reducing the urban heat island effect impacting the city. The planting began in May with 100 trees planted in Cadwalader Park. In total, 1,000 shade trees will be planted throughout Trenton over the next three years. The planting is made possible by a \$1.3M+ state grant through the New Jersey Department of Environmental Protection. In addition to those being planted through the state grant, we've already planted nearly 100 other shade trees along the streets of Trenton in areas that were in critical need of trees. These areas were identified using a mapping tool designed to show where trees are needed in urban areas across the country. This "Tree Equity Score" tool was created by the national nonprofit conservation organization, American Forests, who we've partnered with on past tree planting projects.

In other news, our Co-Executive Director Jay Watson launched the 'Conservationist of Color Playbook'. Developed over several years with partners and content experts, it is a resource to help engage communities of color more in environmental issues, natural resource protection, and enjoyment outdoors.

We also continued our work with local partners in Camden and Elizabeth on tree planting efforts; assisted with Capital City Farm in Trenton, which provides food and cut flowers free to local residents; and once again offered outdoor nature and wellness programs in Trenton, Camden, and Jersey City, including birding, yoga, fishing, nature walks and bicycle rides.



MENANTICO CREEK PRESERVE ADDITION

89 acres, Vineland

NJ Conservation's Menantico Creek Preserve grew significantly in 2023, thanks to a public-private partnership led by NJ Conservation, the American Littoral Society, and Cumberland County. Together we teamed up to acquire 89 forested acres adjoining the preserve that will provide space for recreation, as well as protect wildlife and water quality. Henry and Abe Feigenbaum's heirs honored their memory by selling the land to expand NJ Conservation's Menantico Creek Preserve. The Feigenbaum property on Panther Road in Vineland was purchased using funds from the New Jersey Green Acres Program, Cumberland County and the Open Space Institute. NJ Conservation owns and manages the property as an addition to the original 600-acre preserve protected in 2018.

HUNTERDON COUNTY

ROCKAFELLOWS MILL

16 acres, Readington and Raritan Townships

NJ Conservation joined a coalition of nonprofit conservation organizations, as well as local, county, and state governments to permanently preserve critical lands along the South Branch of the Raritan River. The parcels are adjacent to the South Branch Wildlife Management Area and help preserve a larger contiguous natural area west of Three Bridges village in Readington. Preservation of these lands also contributes to stream restoration and the overall protection of the South Branch of the Raritan River. NJ Conservation, Raritan Headwaters Association, and the Hunterdon Land Trust acquired the parcels and then transferred sole ownership to Readington Township. The land was purchased by the three nonprofits using funds from the New Jersey Department of Environmental

Protection's Green Acres Program, matched by funds from the Hunterdon County Open Space Program. In addition, both Readington and Raritan townships contributed funds raised by their municipal open space taxes.

THOMPSON REALTY CO. OF PRINCETON II

69 acres, Frenchtown

This wooded property directly across the street from Borough Park was permanently preserved as public open space, effectively completing a green belt around Frenchtown. The site, which is in close proximity to the Borough's population center, will provide space for passive recreation, as well as habitat for native plants and wildlife. NJ Conservation assisted the Borough of Frenchtown in acquiring the property with funds from the New Jersey Department of Environmental Protection's Green Acres Program and Hunterdon County Open Space Trust. The property on Creek Road was previously owned by Thompson Realty Co. of Princeton, and was one of the last remaining large tracts of land identified as a priority for preservation in the Borough's open space plan. The new preserve contains a tributary of the Nishisakawick Creek and provides habitat for endangered species. The property also will provide climate change resiliency through flood control, groundwater protection, and recharge of groundwater supplies.

MORRIS COUNTY

TURNQUIST III

37 acres, Washington Township

This wooded property consists of oak, hickory and tulip forest, with headwaters streams that flow to the Musconetcong River, a federally-designated Wild and Scenic River. Located in the preservation

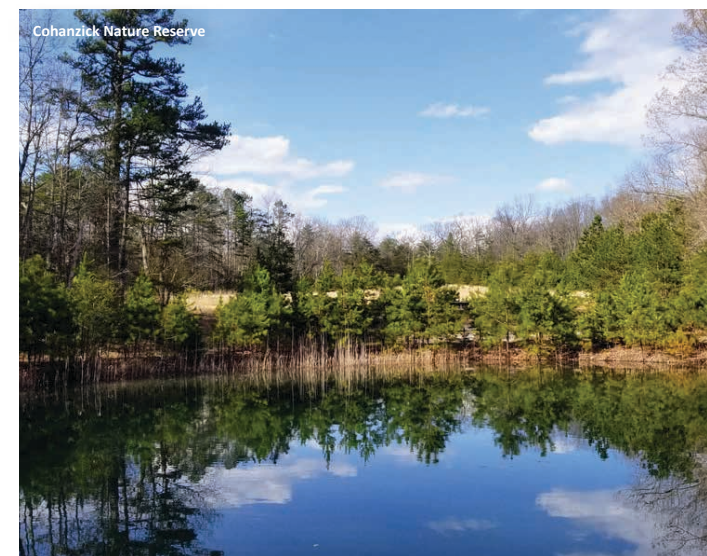
area of the New Jersey Highlands, the property is valuable for its ability to recharge groundwater supplies and serves as the entry point of a trail system. NJ Conservation purchased the property in 2022 and transferred it to Washington Township in 2023, to add to the town's preserved land holdings. Funding for the acquisition came from the Morris County Open Space Trust Fund and state Green Acres funds awarded to the nonprofit Washington Township Land Trust.

OCEAN COUNTY

LEGG

0.5 acres, Lacey Township

The donation of these small, undeveloped parcels expands the nearly 4,000-acre Candace McKee Ashmun Preserve at Forked River Mountain, and is part of an unbuilt "paper street" subdivision called Barnegat Pines, dating back to the early 20th century. The area is a mix of pine/oak uplands, pitch pine lowlands, and cedar swamps. Ownership enables NJ Conservation to better manage and protect protect the natural resources of the surrounding preserve.



SALEM COUNTY

COHANZICK NATURE RESERVE

63 acres, Quinton Township

In 2023, Native American Advancement Corporation (NAAC) acquired the Cohanzick Nature Reserve within the Burden Hill forest area, the traditional homeland of the ancient Cohanzick Lenape people, who have cherished and cared for this land for thousands of years. NJ Conservation is honored to have partnered on this conservation initiative with deep historical and ancestral significance. NAAC, the New Jersey Department of Environmental Protection's Green Acres Program, NJ Conservation, and The Nature Conservancy acquired the former Morningstar Fellowship Church property in Quinton Township. The land was then transferred to the sole ownership of NAAC. NAAC will hold Indigenous conservation education programs at the reserve, providing a unique opportunity for the public to engage with and learn from the land's original stewards.

DICKINSON

26 acres, Upper Pittsgrove

The Dickinson Farm is surrounded by thousands of acres of preserved farmland and is comprised of excellent soils. Located in the Muddy Run watershed, the farm was preserved with Upper Pittsgrove Township's farmland preservation planning grant through the State Agriculture Development Committee.

WIBLE

71 acres, Lower Alloways Creek Township

The 71-acre Wible Farm is adjacent to a major expanse of open space, including New Jersey Department of Environmental Protection's 1,100-acre Maskells Mill Wildlife Management Area. This picturesque parcel is comprised of rich and productive soils. Wildlife species of significance that can be found on the property include the state endangered bald eagle, along with state-designated Species of Special Concern, the great blue heron and wood thrush. NJ Conservation's significant work in the area with a group of farms in Lower Alloways Creek led to a State easement purchase through the State of New Jersey's Farmland Preservation Program.

SUSSEX COUNTY

CULVER BROOK PRESERVE II

172 acres, Frankford Township

The Greater Culver Lake Watershed Conservation Foundation (GCLWCF) acquired 172 acres in 2023 with the help of New Jersey Conservation Foundation and Conservation Advising Services. Funding was provided through the Open Space Institute's Delaware River Watershed Initiative, New Jersey's Green Acres Program and Sussex County. The preservation of this forested tract provides optimal wildlife habitat and is part of the GCLWCF's larger watershed protection strategy for the headwaters of the Paulins Kill Watershed.



Michael Huber Prairie Warbler Preserve

'23 PUBLIC FUNDING PARTNERS

Alloway Township
Bedminster Township
Burlington County
Cumberland County
Frankford Township
Frenchtown Borough
Hunterdon County
Morris County
Maurice River Township
NJ Water Supply Authority
NJDEP Green Acres Program
NJ Department of
Environmental Protection
Peapack Gladstone
US Fish and Wildlife Service
Upper Pittsgrove Township

Raritan Township
Readington Township
Salem County
Somerset County
Sussex County
Southampton Township
State Agriculture
Development Committee
(SADC)
USDA Natural Resources
Conservation Service (NRCS)
Quinton Township
Lacey Township
Ocean County
Washington Township
Woodland Township

POLICY UPDATES

2025 STATE BUDGET WINS!

Funding for Open Space and Farmland Preservation, NJ Transit:

New Jersey is fortunate to have stable, dedicated funding for land preservation. As members of the Keep it Green Campaign, NJ Conservation worked to successfully restore an additional pot of funding for farmland and open space preservation that had expired in 2023. This funding comes via a Corporate Transit Fee, which not only funds public transportation, but also land preservation – helping to protect important habitat for animals and plants, mitigating flooding and stormwater runoff, providing clean drinking water and ensuring that all New Jerseyans have access to high quality open spaces, no matter their zip code.

Trenton: Capital Park: We are grateful to Senator Shirley Turner and Assemblywoman Verlina Reynolds-Jackson, and the many cosponsors who led the charge in securing passage of a resolution to fund Capital Park in the new budget. Once completed, Capital Park will provide a healthy, active and vibrant green oasis behind the State capitol building. It will also connect important historic and cultural assets including the Old Barracks Museum, State Library and State Museum, enhancing the experience for visitors and neighbors alike.

NJ FARMLAND PRESERVATION PROGRAM REACHES A NEW MILESTONE

In 2023, New Jersey's farmland preservation program reached an important milestone – 250,000 acres preserved! NJ Conservation played an important role in achieving that milestone, helping to found and foster the state Farmland Preservation Program starting in the 1980s. Since then we have preserved approximately 24,000 acres of farmland. We are honored to work with strong partners throughout the state to help protect soil and other critical natural resources on farmland in perpetuity. In 2023, we helped push the number of protected acres over the top with the preservation of three farm parcels totaling over 140 acres in Morris and Salem Counties. Protecting farms and locally-grown foods isn't just about acreage – it's also about protecting the most fertile soils to sustain agriculture into the future. We continue to work to ensure soil conservation becomes a priority on preserved lands.

PROTECTING AND STEWARDING PUBLIC FORESTLANDS

Senator Bob Smith reintroduced a new forest bill in early 2024 aimed at changing the way our state forestlands are managed – creating a more comprehensive approach with broader input and backed by new scientific data and inventories. This legislation grew out of the 2023 recommendations



Destruction at Glassboro Wildlife Management Area;
Inset: Dickinson Farm in Salem County (see page 25)

from the Forest Task Force established by Smith and co-chaired by NJ Conservation, New Jersey Audubon, NJ Forestry Association and the NJ Sierra Club. It is critical that the Legislature passes comprehensive forest legislation to ensure our forests continue to combat the climate crisis as carbon sinks, provide clean air and water, and support diverse species of plants and animals.

HOLDING NJDEP ACCOUNTABLE

In early 2023, the State Division of Fish & Wildlife illegally cleared nearly 15 acres of protected wetlands and wetlands transition areas at the Glassboro Wildlife Management Area in order to create habitat for American Woodcock, a popular game species. The State has initiated some positive internal changes to avoid such missteps, but we have been pressing the NJ Department of Environmental Protection (DEP) to publicly share its plans for ensuring that violations such as those that occurred at Glassboro never happen again.

In February 2024, NJ Conservation Foundation staff called the DEP hotline after discovering trucks dumping and filling wetlands on land located between two NJ Conservation properties in the Pine Barrens in Pemberton Township. Unfortunately, the dumping continued for several days. The NJDEP issued a violation notice and we are waiting to see if the owner of the land will be required to completely remove the material and restore the wetlands.

SUCCESS IN COURT! BARNEGAT BAY WETLAND FILL PERMIT REVOKED

On June 7, 2024, the Appellate Division of the Superior Court of New Jersey revoked the NJDEP-issued Freshwater Wetlands General Permit that had authorized construction of a massive disposal facility for dredged sediment on top of wetlands contiguous to the Edwin B. Forsythe National Wildlife Refuge and

Barnegat Bay. The revocation is irrespective of the fact that the dredge project has been nearly finished and the habitat destroyed with no need for restoration or mitigation under the illegal General Permit.

This court decision has been a long time coming! In September 2014, NJ Conservation joined litigation with Save Barnegat Bay and other groups to stop the environmental damage from dredge sediment disposal on the freshwater wetlands next to the Wildlife Refuge. Dredge spoil

should be re-used beneficially, to elevate the tidal marsh plain and build resiliency to sea level rise, not to continue the outdated method of piling up mountains of sediment in salt marshes. The NJ Department of Transportation may try to obtain an after-the-fact Individual Permit from the NJDEP to continue the project. It remains to be seen whether the site will be rightfully restored to serve as vital habitat and act as a natural buffer against coastal flooding.



'23 FRANKLIN PARKER CONSERVATION GRANTS

Since 1989, the Franklin Parker Conservation Grants Program has awarded nearly \$2 million to support 494 conservation projects throughout the state.

- In 2020, New Jersey Conservation Foundation added a racial equity lens to the grant program and has since awarded more than \$120,000 through 44 grants to benefit communities of color across the state and improve equitable access to quality open space and places to grow food locally.
- In 2023, eight nonprofits were awarded Franklin Parker Community Conservation grants totaling \$30,000 to help provide essential resources for addressing environmental challenges and improving the quality of life for communities of color in New Jersey.

Underrepresented communities in New Jersey face disproportionate hardships resulting from impacts of climate change and environmental degradation. Increasing access to green spaces in urban areas provides health and environmental benefits. Green spaces keep surrounding areas cooler, clean the air and water, and make urban areas more resilient to extreme weather from climate change, such as heat waves and floods. Additionally, people with safe access to parks and trails exercise more and are generally healthier.

BOYS & GIRLS CLUBS OF CUMBERLAND COUNTY (VINELAND)

YOUTH FOR CHANGE COMMUNITY GARDEN

This Community Garden connected youth to local resources in the community and engaged them in pollinator gardening, healthy eating, and nature activities.

BRANCH BROOK PARK ALLIANCE (Essex County)

Park Ambassador Program – Invasive Species Eradication

Through this youth workforce development program, Park Ambassadors worked with subject-matter experts to design a thoughtful plan to address the invasive species, Japanese Knotweed. Together, the young adults removed the knotweed and planted native species to control re-infestation.

CATA (COMITÉ DE APOYO A LOS TRABAJADORES AGRÍCOLAS) (Bridgeton)

CATA's Bridgeton Organic Community Garden

CATA's Bridgeton Organic Community Garden was established by farmworkers and low-wage immigrant workers to provide access to organic produce and engage children and community members to learn about sustainable agriculture through traditional organic farming practices. High school interns learned about the food system, agro-ecological farming practices, nutrition, and the intersection of this work with broader issues like labor rights, immigration, and the environment.

8 PROJECTS: TOTAL AWARDED \$30,000

FRIENDS OF HOPEWELL VALLEY OPEN SPACE (Mercer County)

The Outdoor Equity Alliance Agrihood Internship

The Outdoor Equity Alliance Agrihood Internship project led 21 students from underserved communities to critically think about environmental stewardship, agriculture, and social welfare, through hands-on experiences guided by Leah Penniman's book entitled *Farming While Black* and Chris Van Tulleken's book, *Ultra Processed People*.

GROW IT GREEN MORRISTOWN (Morristown)

Conservation of Green Spaces for Pollinators and their Habitats in Urban Areas

This program provided middle and high school students from underserved communities with hands-on experience in an outdoor education and research program to discover the relationship between preservation of pollinators and conservation of land and habitats in urban environments.

HACKENSACK RIVERKEEPER (Hackensack)

Hackensack Riverkeeper Education and Advocacy Programs

The Junior Stewardship Program is a 25-week after-school program specifically targeted to middle school students. In addition to a deeper study of water resource and environmental curriculum, the program offered fishing excursions, watershed fieldwork, guest speakers and an eco-tour of the estuary.

URBAN PROMISE (Camden)

Monarch Butterfly Garden and Outdoor Classroom

The Butterfly Garden is an outdoor classroom where students engage in hands-on application of science curriculum. After more than 15 years of use, Urban Promise revitalized the butterfly garden to make it accessible to the local community and restored ecological balance within the space for the Monarch butterfly and other local species.

WEEQUAHIC PARK ASSOCIATION (Newark)

Young Urban Parks Professional Program

The Young Urban Parks Professional Program connects young people from Newark, ages 14-25, to Weequahic Park, their environment, and community, while building comprehension and awareness of environmental justice issues.



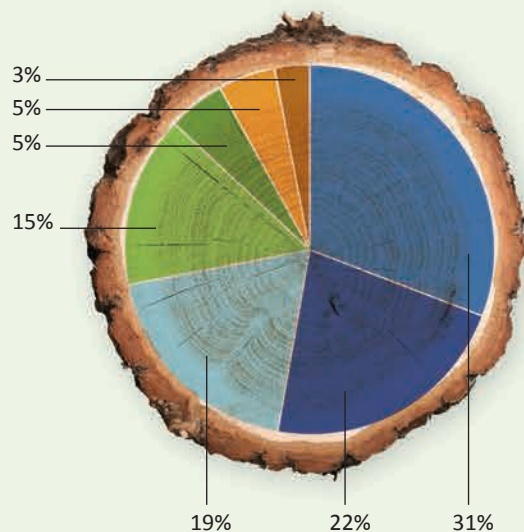
Prepping seeds for Urban Promise's upgraded and restored Monarch Butterfly Garden and Outdoor Classroom in Camden



Interns at CATA's Bridgeton Organic Community Garden market stand

Support and Revenue

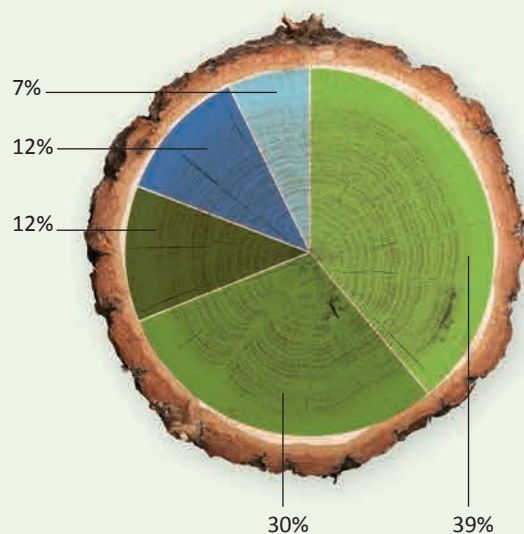
\$7,427,915*



Foundations	31%
Government Grants	22%
Individuals	19%
Organizations	15%
Investment Income	5%
Special Events	5%
Other	3%

Expenses and Land Purchases

\$8,054,717*



Program management	39%
Purchase of land	30%
Program grants and contributions	12%
Fundraising	12%
Management and general	7%

Assets

	December 31 2023 (1)	December 31 2022 (1)
Cash and Cash Equivalents	4,308,148	3,473,330
Investments	17,907,566	15,210,938
Unconditional Promises to Give, net		1,555,669
Beneficial Interest in Split Interest Agreements	125,852	148,035
Grant receivable	61,500	128,356
Other receivable	520,188	920,188
Land, Buildings and Easements	42,253,100	41,151,672
Right of Use Assets	159,520	211,089
Other Assets	203,907	262,995
Total Assets	\$65,539,781	\$63,062,272

Liabilities and Net Assets

LIABILITIES

Accounts Payable and Accrued Expenses	346,449	380,575
Lease Liabilities	161,458	213,952
Total Liabilities	\$507,907	\$594,527

NET ASSETS

Without Donor Restrictions	55,543,488	52,860,405
With Donor Restrictions	9,488,386	9,607,340
Total Net Assets	65,031,874	62,467,745
Total Liabilities and Net Assets	\$65,539,781	\$63,062,272

*Unaudited financial information

(1) Extracted from the December 31, 2023 audited financial statements.

To receive a copy of the complete audited financial statements, please send a request to info@njconservation.org

LEAVE A LEGACY for Future Generations

The Red Oak Society was founded in 2011 to recognize those who donate to New Jersey Conservation Foundation through planned giving. We thank the conservation-minded members who are preserving New Jersey's natural resources and lands for future generations.

To become a member of the Red Oak Society, please let us know if you wish to support New Jersey Conservation Foundation's mission by:

- Giving through your will or charitable trust
- Giving through IRAs, qualified retirement plans, insurance or donor advised funds
- Gifts of cash, securities and real estate

To discuss how your planned gift will help ensure the permanence of preservation, please contact Bo Humphrey, Director of Development and Major Gifts, at 908-234-1225 or bo.humphrey@njconservation.org. While it is not necessary to advise us in advance that you have included New Jersey Conservation Foundation in your estate planning, we encourage you to let us know of your plans so that we may thank you and learn more about your interests.

If you wish to add us in your will or estate plan, please use the following listing:

New Jersey Conservation Foundation
170 Longview Road
Far Hills, NJ 07931.

Our tax ID number is 22-6065456.



MEMBERS OF THE RED OAK SOCIETY

Anonymous Donors	Walter Brooks and Dorothy Stewart Evert*	Janet and Daniel E. Murnick
Fredrick A. Allis*	Sarah P. Fiske*	Sigrid S. Nagle*
Evelyn Arcuni*	John J. Fitzpatrick*	The Hon. Maureen Ogden*
Carl L. Austin, Sr.*	Elizabeth Ernst Fosbinder*	Elizabeth C. Ohly*
Edward F. Babbott*	Maxine Friedman	Caryl Leong and Donna Paino
Ira H. Beckman*	Barbara Galli*	Franklin E. Parker*
Christina and James Besanceney	Elizabeth K. Gardner*	Harry F. Peters, Jr.*
Louis C. Bodenheimer*	Margaret Gardner*	Robert Pierson*
Andrea Bonette	Joan C. Gilson	Virginia Pierson
Louise Bossert*	Ruth Gleason*	Kathryn A. Porter
JoAnn Bowman	Alfred R. Gnam*	Elizabeth Potter*
Rose Bracco*	Elsie B. Grove*	James A. Quinn
Zella Brady*	Stephen C. Gruber	Joann and Arlindo S. Ramos
Elizabeth Brainard Reed*	Eleanor Gural*	Barbara Ray*
Anonymous	Thomas B. and Archer Harvey	Elizabeth B. Reed*
Jennifer Bryson	Nora E.J. Hayes*	L. Keith and Lisa Reed
C. Austin Buck*	Elizabeth D. Healy*	Allen Reese and Joseph M. Hengel
Ann H. Bumsted*	Harold Healy*	Timothy C. Riegert
Michele S. Byers	Mary D. Herberich*	William N. Rogers
Sylvia S. Campbell*	John S. Hirschhoff*	Gregory Romano
Ogden B. Carter*	Roberta F. Holden*	Robert C. Ross
Nancy Castleman*	Caroline P. Huber*	David Rutherford*
Catherine A. M. Cavanaugh*	Donald and Beverley Jones*	Anna L. Salvato*
Dr. Theodore Chase and Mrs. Victory Chase	Elizabeth S. Jordan*	Walter and Patricia Savage*
Sophia Chroscinski*	John and Susan Karlin*	Betsy J. Schnorr
Tillie Chwat*	Evangeline MacKay H. Keasbey*	Diane P. Schwarz*
Jack R. Cimprich and Ronnie E. Cimprich, VMD	Larry and Barbara Keller*	Joan S. and deLacy H. Seabrook*
Erica and JP Colace	Robert W. Kent*	Betsy B. Shirley*
Francis and Elizabeth Coles*	Jane B. Knight*	Katherine Smith*
Beryl Robichaud Collins*	Samuel W. Lambert, III	E. Esty and Helen Stowell*
Jean K Colvin*	Frances E. Land*	Mark Thomas
Warren P. Cooper*	Eleanor R. Lawrence*	Ted and Penny Thomas
Mary Lou Curran*	Vera Lazar	Althea Thornton*
William D. Dana*	Valerie Ann Leeds and Kevin Knotts	Michael Dawson and Robert Tomaselli
Rev. Julia S. Dawson	Larrabee C. Lillie*	Mayor Paul H. Tomasko
Michael Dawson and Robert Tomaselli	Kenneth W. Lloyd*	Benjamin W. Tucker, Jr.*
Margie DeAngelo	Donald MacGuigan*	Alphonse Tvaryanas, Jr.*
Lillie R. DeBevoise*	Kenneth L. MacRitchie	Mary Upmeyer*
William D. deCamp*	Wendy Mager and Eric Monberg	Artemis Vardakis*
Hugo and Margaret deNeufville*	Ellen G. McConnell	Nan Hunter Walnut*
Dr. Rosina B. and Richard Dixon	Robert McLean*	Ruth Creighton Webster*
Joseph Dlugach*	The Hon. Joseph H. Metelski	Catherine Welsh*
Nelson C. Doland, Jr.*	Kristina Miller	Dorothy Moran Werner*
Cyril dos Passos*	Winifred C. Millikin*	Clarissa Willemsen*
Ann O. Edison*	Gordon A. Millspaugh, Jr.*	Muriel Williams*
Theodore M. Edison*	Eric Monberg and Wendy Mager	Virginia T. Williams*
Frank Eggert*	Mary W.T. Moore*	Louise C. and Clifford C. Wilson
Richard W. Elbersen*	Christopher E. Moore	William T. Wyman
Charles G. and Eleanor E. Engel	David F. Moore	Esther Yanai*
Nicholas and Eleanor English*	Edward Mullen*	Robert L. Zion*
	Kurt Munkacsi and Nancy Jeffries	

*denotes deceased members



New Jersey Conservation
FOUNDATION



NEW JERSEY CONSERVATION FOUNDATION
Bamboo Brook | 170 Longview Road | Far Hills, NJ 07931

www.njconservation.org

Green frog, avianthic at Franklin Parker Preserve by Bill Lynch

“ UNIFORMITY
IS NOT NATURE’S WAY;

DIVERSITY

IS NATURE’S WAY.”

-VANDANA SHIVA