

# New Jersey Conservation



4

#### CELEBRATING THE WICKECHEOKE

Thanks to decades of work and meaningful partnerships, the Wickecheoke Creek Preserve thrives - despite ever-present challenges - as a haven for biodiversity among historic and rural character.

7

#### ANOTHER UNNEEDED PIPELINE STOPPED

We won a major battle in the ongoing fight against the Regional Energy Access Expansion (REAE) pipeline project.

8

#### NEW CUMBERLAND COUNTY TRAIL

The Gregory Romano Trail, named for longtime NJ Conservation assistant director, opened this autumn at the Menantico Creek Preserve in Vineland.



New Jersey Conservation  
FOUNDATION

# Trustees

**Louise Currey Wilson**  
PRESIDENT

**Wendy Mager**  
FIRST VICE PRESIDENT

**Meredith Moore**  
SECOND VICE PRESIDENT

**Finn Caspersen, Jr.**  
TREASURER

**Jane Higgins**  
SECRETARY

**Kenneth H. Klipstein, II**  
ASSISTANT SECRETARY

George N. Allport  
Liping An  
Kathleen Bourke  
Patricia Canning  
Theodore Chase Jr.  
Jack Cimprich  
Rosina B. Dixon, M.D.  
Clement L. Fiori  
James W. Hughes  
William T. Knox IV  
Andrew Kricun  
Kevin Kuchinski  
James Lyons  
Sean Moriarty  
Frances Raymond Price  
Alex Rivera  
Meredith Taylor  
Jennifer Williams

## HONORARY TRUSTEES

Hon. Thomas H. Kean  
Hon. Christine Todd Whitman

## ADVISORY COUNCIL

Bradley M. Campbell  
Christopher J. Daggett  
Wilma Frey  
John D. Hatch  
Douglas H. Haynes  
H. R. Hegener  
Hon. Rush D. Holt  
Cynthia K. Kellogg  
Blair MacInnes  
Thomas J. Maher  
Scott McVay  
David F. Moore  
John Parker  
L. Keith Reed  
Jamie Kyte Sapoch  
Leslie Sauer  
Tama Matsuoka Wong

## EXECUTIVE DIRECTORS

Alison Mitchell  
John S. Watson, Jr.

## ABOUT THE COVER

On the evening of Friday, October 10, Richard Lewis - landscape photographer and dedicated conservationist - captured this incredible image of the Aurora Borealis at Franklin Parker Preserve. Richard leads photography workshops at the preserve in the spring and fall. Visit his website for information and to view more incredible images: [www.richardlewisphotography.com](http://www.richardlewisphotography.com).



## From Our Co-Executive Directors

Alison Mitchell | Jay Watson

We are grateful for your partnership in protecting important lands across New Jersey. This year has brought exciting new land preservation projects and the promise of unforeseen challenges with a new federal administration that threatens to rollback hard won protections for natural resources we have all worked for decades to secure.

NJ Conservation Foundation is no stranger to big challenges and we are ready to defend natural resource protections and ward off damaging policy changes, while continuing to save important lands all around the state that provide wildlife habitat, access to nature, and mitigate the effects of climate change – for the benefit of all.

Born out of the fight to save the Great Swamp from a jetport proposal, this organization has risen to enormous challenges over the years. From saving over 140,000 acres around the state, to partnering to protect the iconic Palisades Cliffs from a high-rise corporate headquarters, and defeating the unneeded PennEast pipeline that threatened hundreds of acres of preserved lands and pristine waterways - together we have made a tremendous difference.

Looking back at 2024, there is much to celebrate! We protected important lands like the 141 acres of forest in Franklin Township, Gloucester County, saved from development through a multi-party public-private partnership. We won an important and seminal victory in federal court in the ongoing fight against the Regional Energy Access Expansion pipeline project — another unneeded expansion of gas infrastructure capacity and pollution into New Jersey. Our stewardship staff joined with partners working to eradicate an invasive pond mussel – an important project designed to prevent this mussel from escaping into the Delaware River system.

Next year, Jay Watson will take on a critical new role at NJ Conservation, helping to launch a “Green and Healthy Cities” campaign to establish a task force dedicated to green infrastructure investments in the state’s urban areas. He will continue to lead a major tree planting initiative in Trenton that includes planting 1,000 trees over the next three years, and to advocate for important parks projects in the city.

Beginning in January 2025, Alison Mitchell will lead as sole Executive Director. Anthony Cucchi, an accomplished conservation professional and former superintendent of parks for the Mercer County Park Commission, will lead NJ Conservation’s statewide land protection, policy, and urban action work as Director of Programs.

We continue to be inspired by your support and collective love of the natural world. We cannot thank you enough for acting as vital partners in working to make New Jersey a place that offers all living things a more viable and brighter future.

Best wishes from New Jersey Conservation Foundation’s staff and trustees for a joyful holiday season and a happy and healthy 2025!

Onward!

*Alison Mitchell* *John S. Watson, Jr.*



New Jersey Conservation Foundation is a private, non-profit organization whose mission is to preserve land and natural resources throughout New Jersey for the benefit of all.

We protect strategic lands through acquisition and stewardship, promote strong land use policies, and forge partnerships to achieve conservation goals.

For membership information, please visit our website at [www.njconservation.org](http://www.njconservation.org) or call us at 1-888-LANDSAVE. Our mailing address is 170 Longview Road, Far Hills, New Jersey 07931.







New Jersey Conservation Foundation staff and volunteers offer a variety of events and programs to showcase the state's incredible natural resources. We hope you'll join us in 2025!



Pictured clockwise from top:

As part of the Helen Corbin Carter & Ogden B. Carter Urban Birding Program, we partnered with In Color Birding Club to lead a bird walk through Trenton's Cadwalader Park.

Community members enjoy a free fishing day at Camden's Cramer Hill Waterfront Park.

Birders enjoy a morning at Liberty State Park during the Big Day, hosted jointly with the Feminist Bird Club of Jersey City and Liberty State Park.

Elizabeth Reyes, Capital City Farm Cut Flower Production Manager, shows off beautiful blooms grown on the farm in Trenton. Flowers are provided to community members during floral design workshops.

Senior Land Steward Russell Juelg leads the annual Pine Barrens Plant Course at Franklin Parker Preserve.







# CELEBRATING THE PRESERVATION

## of an Iconic & Historic New Jersey Landscape

The story of Wickecheoke Creek Preserve, affectionately known as the ‘Wick,’ stretches across four decades, three historic landmarks, and more than 4,000 acres of protected land. This major conservation effort was sparked by the late Beverley and Donald Jones — a Hunterdon County couple dedicated to preserving the idyllic character of the region they loved.

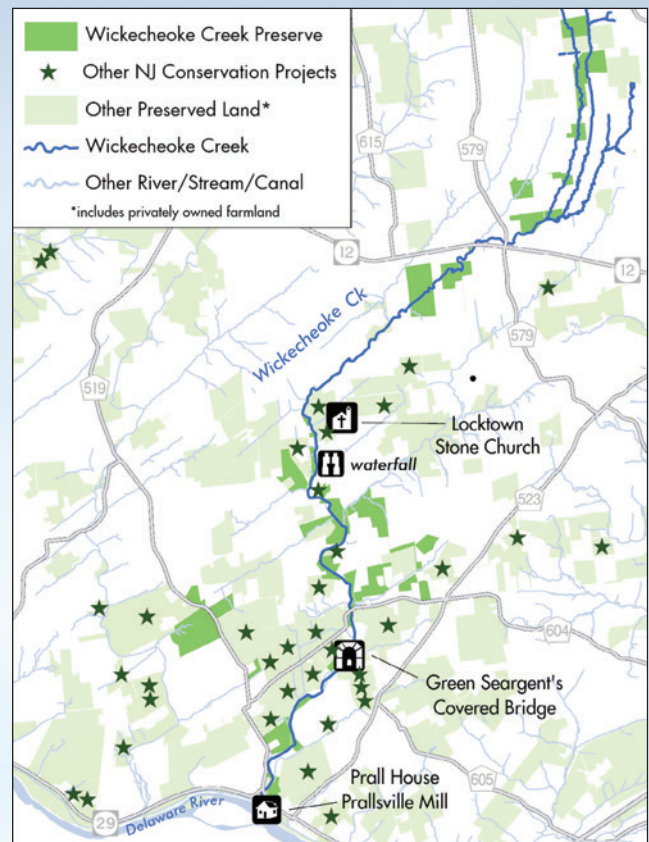


After purchasing an old dairy farm in Delaware Township in the 1950s, the Joneses became enamored with the area. So much so that these two local conservation legends were the driving force behind saving three of the area's historic landmarks: The Locktown Stone Church, Green Sergeant's Covered Bridge – one of the last covered bridges in operation in the state – and the Prallsville Mills.

The preservation of these landmarks led to the idea of connecting them by way of a greenway of preserved land – a plan hatched by Donald and former New Jersey Conservation Foundation (NJ Conservation) Executive Director Dave Moore, leading to the creation of the Wickecheoke Creek Preserve. That initial idea grew to propel the preservation of land along the tributaries of the Wickecheoke Creek and beyond. The success of the greenway is a triumph of many – including the Joneses, NJ Conservation and fellow conservation organizations, and local governments.

The Preserve encompasses more than 4,000 acres of mature forest, shrubland, meadows, ponds, and bucolic farmland. Beginning on the Croton Plateau and following the rolling hills of southwestern Hunterdon County, the Wickecheoke Creek winds its way through the Preserve, spilling over rocky ledges on its way to the Delaware River. The Preserve's forest habitats include dramatic rock outcrops, hemlock ravines that hug the creek, and abundant sugar maples that put on an incredible fall display.

Shrubland and meadows throughout the Preserve are home to a diversity of native plants that provide high-value fruits for migrating birds, and foster butterfly and grassland bird populations. Collectively, these habitats host a variety of New Jersey's distinct flora and fauna, including rare species



of statewide conservation importance. A short list of these species include the barred owl, red-shouldered hawk, long-tailed salamander, bobolink, Eastern meadowlark, and Adam and Eve orchid.





The Wickecheoke Creek Preserve also harbors a unique, rural portion of the Northern Piedmont. This geologic province is a largely developed region that runs from southern New England through the north-central portions of New Jersey to southeastern Pennsylvania. Remnants of natural, agricultural, and cultural heritage in this region are few, highlighting the significance of the Preserve.

NJ Conservation has led the preservation of the Wickecheoke Creek watershed since the 1980s, preserving some of the very first farms at the beginning of the state farmland preservation program in the scenic Rosemont Valley. Those early projects and the efforts that followed have helped maintain large amounts of clean drinking water for residents of central New Jersey — over 70 million gallons of potable water is pumped from the Delaware-Raritan Canal at the base of the watershed every day.

The extensive Preserve has been made possible through collaboration with partners like Delaware Township, Hunterdon County, the New Jersey Green Acres Program, the State Farmland Preservation Program, the U.S. Department of Agriculture's Natural Resources Conservation Service, and the N.J. Water Supply Authority.

Threats to the region are ever-present. The PennEast Pipeline, a 120-mile pipeline to carry fracked gas from northeastern Pennsylvania to New Jersey, was proposed within the Wickecheoke Creek Preserve and would have brought untold damage to



## JONES MEMORIAL HIKE TURNS 30

This year marked the 30th Annual Donald and Beverley Jones Memorial Hike, hosted jointly by New Jersey Conservation Foundation and the Prallsville Mills. Donald was a generous and enthusiastic president and trustee of NJ Conservation, and founder of the Delaware River Mill Society, which operates the Prallsville Mills. After Donald passed away in 1994, his family and friends at NJ Conservation established the Donald Jones Memorial Hike, held on a Sunday afternoon each November. When Beverley passed away in 2013, the annual event was renamed the Donald and Beverley Jones Memorial Hike.

On Sunday, November 10<sup>th</sup>, members of the community and supporters of NJ Conservation and the Prallsville Mills meandered through bucolic fields and autumnal forests on two separate hikes that met at the Jones Farm, and a one-mile stroll along the Delaware and Raritan Canal, which honored the 50<sup>th</sup> anniversary of the Canal Commission this year. Hungry hikers ended the day with pizza, beverages, and shared stories about the dedication of the Jones family and partnerships that have preserved important historic and natural resources in this special part of the state.



In the 1950s, Donald and Beverley Jones moved into a 200-year-old stone farmhouse in Sergeantsville, Hunterdon County. They quickly grew to love their community's unique rural and historic character and set out to ensure that it would endure. Their involvement was monumental in the preservation of the landscape and three historic landmarks: the Locktown Stone Church, the Green Sergeant's Covered Bridge, and the Prallsville Mills.

Trails throughout the preserved area were established after NJ Conservation led a group of conservationists — including Donald and Beverley — to England in 1992 to learn about the extensive network of footpaths that connect countryside villages and towns there. They came back inspired by Britain's "Right to Roam" custom of allowing foot passage over the countryside, with ideas on how to adapt it to western Hunterdon County.

As a result, NJ Conservation has blazed hiking trails throughout the Wickecheoke Creek Preserve. The trails are open to the public, and leashed dogs are permitted. Parking areas and bicycle racks are provided in several locations.

**For trail maps and more information on the preserve, visit:**  
[www.njconservation.org/preserve/wickecheoke-creek-preserve](http://www.njconservation.org/preserve/wickecheoke-creek-preserve).



preserved lands and some of the highest quality waterways in the state.

The effort to defeat the project was a quintessential “David vs. Goliath” battle. The PennEast Pipeline was well-funded by the oil and gas industry and its allies, and approved by the Federal Energy Regulatory Commission, despite clear evidence that it was not needed and would cause significant harm to the environment.

Strong opposition came from NJ Conservation and from affected landowners, organized local citizens, municipalities, the State of New Jersey and conservation organizations like The Watershed Institute, New Jersey League of Conservation Voters, Delaware Riverkeeper Network, Clean Air

**“We have gotten a lot of community support for the Wickecheoke Creek Preserve, and received significant state and local funding to acquire key tracts. This land has been preserved by the people of New Jersey for the benefit of the people and the environment.”**

**- ALIX BACON**  
Project Manager at NJ Conservation

Council, and many others. In 2021, the PennEast Company announced the project’s cancellation – and we all celebrated a major victory!

NJ Conservation’s vision for the greenway has always been to enhance and restore natural resources, provide model stewardship of its biodiversity, and offer excellent public recreation and educational opportunities.

Alix Bacon, Project Manager, notes that threats – from pipelines to subdivisions – are present, but the Wickecheoke region has remained largely intact thanks to the many preservation successes. “The lands that now make up the Wickecheoke Creek Preserve have not really changed for a long, long time...hundreds of years. So, that is very special.”

To read more about important stewardship work in the Wickecheoke Creek Preserve dealing with the highly invasive Chinese pond mussel, visit: [njconservation.org/stories](http://njconservation.org/stories).

## We challenged another unneeded gas pipeline AND WE WON!

We won a major battle in the ongoing fight against the Regional Energy Access Expansion (REAE) pipeline project – another unneeded expansion of gas capacity and pollution into New Jersey.

In *New Jersey Conservation Foundation, et al. versus the Federal Energy Regulatory Commission (FERC)*, a federal appeals court overturned FERC’s approval of the REAE project. This expansion of fossil fuel capacity into New Jersey was found to be unnecessary and failed to meet legal standards and environmental protections.

New Jersey Conservation Foundation brought this case with our partners because of the continued threat posed to important lands – including preserved lands – by the proliferation of gas pipeline infrastructure. Projects like this stand in the way of moving to a clean energy future and, as with the now defeated PennEast pipeline, are built to supply unneeded, excess gas financed on the backs of ratepayers. This case is unprecedented as we have seen fossil fuel infrastructure that harms important natural lands and waterways approved by FERC time and time again with no resulting public benefit. The fight is not over yet, but winning this battle is a huge victory for New Jersey and beyond!

“In a pivotal decision, the DC Circuit found that FERC wrongly green-lighted yet another unneeded fossil fuel infrastructure project that would cost New Jersey consumers \$1B in increased rates. New Jersey Conservation Foundation has been fighting to ensure that FERC considers public need – not solely private interests – for years, and the court agreed that FERC hasn’t been doing its job,” said Alison Mitchell, co-executive director, New Jersey Conservation Foundation. “In so doing, the courts have recognized the central role of state regulators and consumer advocates that do the hard work in making sure their own gas and energy needs are met with cost- and climate-effective solutions.”

Niskanen Center was represented by the New Jersey Conservation Foundation in the case, stated: “The court unanimously agreed that FERC failed to comply with the Natural Gas Act when it concluded that there was a public need for the REAE project over New Jersey’s assertion that its ratepayers do not need additional gas capacity and that FERC failed to weigh the project’s climate harms in approving the expansion. The court also agreed with the petitioners that FERC’s National Environmental Policy Act (NEPA) analysis was inadequate for failing to meaningfully evaluate the project’s enormous contributions to climate change.”

**This is a major victory for our climate, important natural lands, and waterways. Thank you for your support in standing up to threats to land and other natural resources in the Garden State!**





# The Gregory Romano Trail is officially open!

Photo by Tim Morris

*“It’s very nice to have it named after me. But to me, the key is that this trail and preserve is now officially open to the citizens of the state and of Cumberland County.”*

– GREGORY ROMANO

A small group of friends and supporters gathered with Greg Romano and his family at the Foundation’s beautiful Menantico Creek Preserve in Vineland, Cumberland County to dedicate the Gregory Romano Trail. Romano, a Vineland native, served from 2004-2019 as director of the land program and assistant director at NJ Conservation, leading efforts to protect 35,000 acres around the state during his 15-year tenure.

“That’s twice the area of Manhattan, which is pretty extraordinary,” noted Co-Executive Director Alison Mitchell.

The new trail system is dedicated to Greg’s incredible legacy and traverses nearly four and a half miles of the preserve. The forests there serve as breeding grounds for many migratory songbirds and are home to at least seven endangered, threatened, and special-concern animal species, including bald eagles, barred owls, Cope’s gray tree frogs and red-headed woodpeckers.



Greg Romano and his namesake trail by Courier-Post



# GAINING GROUND

New Jersey Conservation Foundation and its partners permanently preserved 498 acres from March 2024 through August 2024. These lands include family farms as well as natural areas that safeguard clean drinking water, protect wildlife habitat, and offer scenic beauty and outdoor recreation.

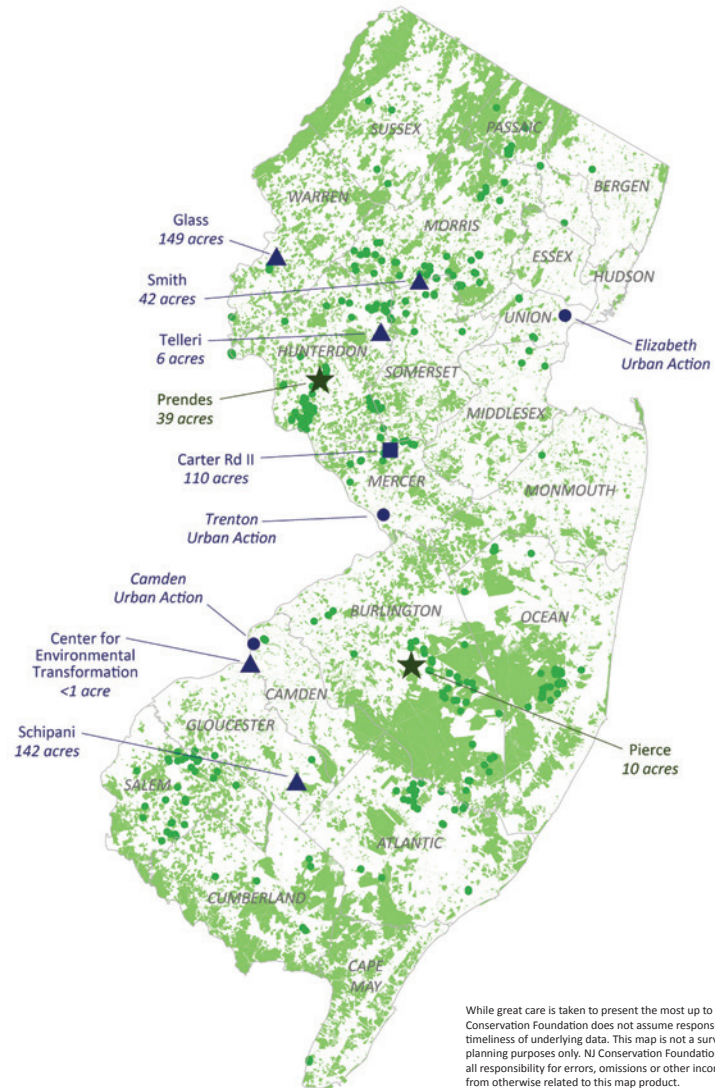
THANK YOU TO ALL MEMBERS, VOLUNTEERS AND PARTNERS FOR HELPING TO PRESERVE THESE LANDS!

March 2024

August 2024

- ★ NJ Conservation Owned: 49 acres (Fee or Easement)
- ▲ Preserved in Partnership: 339 acres
- Urban Action
- Transfers (110 acres)

- NJ Conservation Foundation Owned & Managed Properties (Fee or Easement)
- Preserved Land (Open Space & Farmland)



It's easy to join New Jersey Conservation Foundation online - visit the website at [www.njconservation.org](http://www.njconservation.org)

**Become a Member Today!**





A Great Blue Heron stands in shallow water, surrounded by tall, golden-brown reeds. The heron has a long, sharp orange beak, a white head with a black stripe through its eye, and a long, thin black plume on its head. Its body is covered in grey and blue feathers. The water is calm, reflecting the surrounding greenery.

# NEW 141-ACRE PRESERVE

## established in Franklin Township

A joint effort by multiple conservation organizations alongside state and municipal governments has permanently protected 141 forested acres in Franklin Township, Gloucester County from development. This effort, led by South Jersey Land and Water Trust (SJLWT), will not only prevent the deforestation of this ecologically important property, but also preserve quality wildlife habitat and clean drinking water. The property, dubbed Franklin Indian Branch Preserve, is open to the public for passive recreation and activities related to environmental education.



SJLWT and New Jersey Conservation Foundation purchased the property using grant funding through the New Jersey Department of Environmental Protection's (DEP) Green Acres Program. SJLWT will own and manage the Preserve, which fronts on Main Road and Tuckahoe Road in Franklin Township. The property belonged to the Louis Schipani Estate and William Hallissey. The landowners generously donated a significant portion of the land value.

Additional funding for the purchase of the land came from DEP's Office of Natural Resource Restoration (ONRR), and Franklin Township. Natural Lands, a nonprofit organization based in Pennsylvania, also contributed toward the costs of acquiring the property.

"Many thanks to the Louis Schipani Estate and William Hallissey for their commitment to, and generous contribution toward, the preservation of this woodland gem. Maintaining woodlands is an essential tool in our efforts to combat the effects of climate change," said Christine Nolan, SJLWT's Executive Director. "SJLWT is also deeply grateful for the support of our preservation partners who enabled these 141 acres of forested habitat to be permanently protected for wildlife and our enjoyment of nature."

The Preserve is part of a core forest that spans the central portion of Franklin Township into Monroe Township and serves as a significant forest connector.

"Having this contiguous forest is a tremendous asset for the region," said Rob Ferber, New Jersey Conservation Foundation's Regional Manager for the Delaware Bay Watershed. "This beautiful, natural carbon sink improves air quality by absorbing carbon dioxide from the atmosphere and, together with other forests, farmlands, and wetlands across the state, can offset a portion of New Jersey's greenhouse gas emissions."

The property is located close to the DEP's White Oak Branch Wildlife Management Area, which serves as habitat for bald eagle, red-shouldered hawk, barred owl, Northern pine snake, Cooper's hawk, great blue heron, sharp-shinned hawk, wood thrush, and worm-eating warbler. The Preserve is also a

Photo by Rob Ferber



high point of the Maurice River Watershed where headwaters converge and create streams that feed the Maurice River, which is federally designated as part of the National Wild and Scenic Rivers System.

"Green Acres is very proud to have helped in the preservation of this important property," said DEP Green Acres Program Director Martha Sullivan Sapp. "Making connections for both people and wildlife is central to our conservation and recreation goals, and we congratulate our partners on this successful acquisition."

"The Township Committee and I are delighted to see this preservation of over 140 acres of additional open space in Franklin Township, and are glad that we were able to assist in these efforts," said Franklin Township Mayor Jake Bruno. "This preservation of the Schipani-Hallissey property adds to the more than 600 acres of Township farmland that have been preserved since 2019, along with 200 additional acres of farmland which are in the application process."



Northern pine snake

***"This beautiful, natural carbon sink improves air quality by absorbing carbon dioxide from the atmosphere and, together with other forests, farmlands, and wetlands across the state, can offset a portion of New Jersey's greenhouse gas emissions."***

**— ROB FERBER**  
NJ Conservation Regional Manager,  
Delaware Bay Watershed





thank  
you!

New Jersey Conservation Foundation welcomes new donors and expresses our thanks to all who made contributions between January 1, 2024 and September 30, 2024. With your support, we preserve and protect New Jersey's lands and natural resources.

## New Donors

(from January 1 -  
September 30, 2024)

Joanne Aulicino  
The Edward F. Babbott  
1993 Charitable  
Remainder Unitrust U/A  
Kenneth and Pamela  
Barroway  
Lara Blackman  
Monica Cahill  
Amghy Chacon  
James W. Davis  
Patricia DePol Charitable  
Foundation  
Paul Doherty  
Erdman Family Foundation  
Estate of Jane B. Knight  
David Fesette  
Brooke Foley  
Elizabeth Golato  
Rosemary Gonzalez  
Kayla Gordon  
Laurie Gregory  
Lina Grohowski  
Jerry and Marian Haag  
Mary D. Herberich Family  
Trust  
Holly Kempner  
Gemma Keremedjiev  
David Kim  
Jennifer Kline  
James Lowell  
Bill Machotka  
Heather Macpeek  
Ali Maher  
Melissa Meyers  
Eve Niedergang  
Isabelle A. Nieves  
James O'Neill  
Andrew J. Opperman  
Thomas J. Paine  
Shivani Patel  
The Schmidt Family  
Foundation  
Phyllis Spinelli

John Stevens  
Kirsten Sullivan  
Patsy Wang-Iverson  
Gregory A. Washburn  
Elizabeth Young

## \$500 and Above Donors

(from January 1 -  
September 30, 2024)

1919 Investment Counsel,  
LLC  
George N. and Grania  
Allport  
American Farmland Trust  
Liping An  
Merrick G. and Linny  
Andlinger  
Anonymous Donors  
The Jacqueline Asplundh  
Family Fund  
Atlantic Shores Offshore  
Wind  
Chris and Kelly Atwell  
The Edward F. Babbott  
1993 Charitable  
Remainder Unitrust U/A  
Alix Bacon  
Catherine Bacon  
Balwierczak Charitable  
Fund  
Christopher Barr and  
Patricia Shanley  
Kenneth and Pamela  
Barroway  
Bassett Foundation  
Randy Baum  
Roberta G. Bennett  
Luke M. Beshar  
Barbara and W. M.  
Blumenthal  
Bohren and Bohren  
Associates, Inc.  
Andrea Bonette  
Bourke Family Fund  
The Brady Family Fund

Brownfields  
Redevelopment Solutions,  
Inc.  
Thomas A. and  
Barbara Brummer  
Jennifer Bryson  
Bubb Family Fund  
Michele S. Byers  
Roger Byrom and  
Wendy Rasmussen  
Campbell-Hackl Family  
Fund  
Eleanor S. Campbell and  
Darrell Swank  
The Helen R. Cannon  
Charitable Fund  
Finn and Emily Caspersen  
Edward B. Casson  
Theodore and Victory  
Chase  
Jack R. Cimprich and  
Ronnie E. Cimprich, VMD  
Elliot Cohen  
The Cole Family Charitable  
Fund at Schwab  
Charitable  
Conklin Family Fund  
Mara Connolly and  
Pete Taft  
Tracy Cruise and Scott Daal  
Desiree and Anthony  
Cuitino  
Christopher J. and  
Beatrice Daggett  
Michael Dawson and  
Robert P. Tomaselli  
William deCamp Jr. Fund  
of the Community  
Foundation of New Jersey  
DeCotiis, Fitzpatrick, Giblin,  
and Cole  
The Maggie and Michael  
Delia Foundation  
Patricia DePol Charitable  
Foundation  
Alvin and Linda Dietz  
Fund of the Community  
Foundation of New Jersey  
Richard and Rosina B. Dixon  
Katherine V. Dresdner, Esq.  
DVP Construction Group  
EarthShare of New Jersey

Lynn and Tom Ebeling  
Richard and Norma Edom  
Jeanne R. Eisele  
Brad and Jacqueline Fay  
Clem and Joanna S. Fiori  
Foodshed Alliance  
Fox Foundation  
Deborah S. Freedman and  
Avram Paradise  
Friends of Michael Huber  
Preserve, Inc.  
The Fund for New Jersey  
Theresa Galaro  
Arthur J. Gallagher Risk  
Management Services,  
LLC  
Elizabeth Garcia-  
Dominguez  
Garden Club of Morristown  
Garden Club of Princeton  
Bruce M. Gast  
The Gelfand Family  
Foundation, Inc.  
PF and GM George  
Charitable Fund  
The William L. Gibson  
Fund of the Community  
Foundation of New Jersey  
Glenmede Trust Company,  
NA  
Rick Nordling and  
Veronica Goldberg  
Lynda R. Goldschein  
Robert C. Greenwood  
Gordon and Llura Gund  
Fund of the Princeton  
Area Community  
Foundation  
Helen H. Haines  
Samuel M. Hamill  
David L. Hansen and  
Ruth Charnes  
Amy Hansen and  
Mark Canright  
Harris Family Fund of  
the Princeton Area  
Community Foundation  
The Merrill G. & Erita  
Hastings Foundation  
John D. Hatch and  
David Henderson  
Nell and Daniel Haughton

Peter Haugk Charitable  
Fund  
Gates H. and  
Mary Ellen Hawn  
Heat Pump Nation  
Herbalist & Alchemist, Inc.  
Mary D. Herberich Family  
Trust  
Catherine and  
Richard W. Herbst  
Herold Law, P.A.  
Elisabeth and James Hicks  
Tom and Jane Higgins  
Howard Hirsch  
Rush D. Holt and  
Margaret Lancefield  
Catherine Hughes  
James W. and Connie O.  
Hughes  
Robert and Florence Jennes  
Donnetta Johnson  
Sigmond Johnson  
Henry Jonas and  
Tricia Deering  
Stephanie B. Jones  
Candace L. Jones and  
Stephen Phillips  
Leslie Jones Sauer  
Martin D. Judd  
F. M. Kirby Foundation  
Kenneth H. and Lee  
Klipstein  
Ernest Christian Klipstein  
Foundation  
Estate of Jane B. Knight  
Karen E Kohler Charitable  
Foundation  
Elizabeth P. Kohn  
Sybil B. Kramer  
Kuchinski Family Giving  
Fund  
William Kurtz  
Purba and Anupurba Lahiri  
Jan Larsson  
Pierra Le Gorrec  
Joseph and Jennifer  
Lemond  
Mark Leuchten  
Richard and Vivian Lewis  
The Robert A. and Carla Lee  
Lewis Charitable Gift Fund



Liebhaver/Cooke Giving Fund, a Donor Advised Fund of Renaissance Charitable Foundation  
 Andrew and Anya Littauer  
 The Luckow Family Foundation, Inc.  
 Jim Lyons and Jennifer Palmieri  
 Eric Monberg and Wendy Mager  
 Maine Community Foundation  
 Alexander Mateus  
 Michael Mathews  
 Helen & William Mazer Foundation  
 Mark McNulty  
 Cynthia McVay  
 Hella and Scott McVay Fund of the Princeton Area Community Foundation  
 The Hon. Joseph H. Metelski  
 Kristen Middleton  
 Sally Mikkelsen  
 Angus Miller  
 Miranda Fund of the Community Foundation of New Jersey  
 Meredith Moore and Steve Rabbe  
 Liza and Charles S. Morehouse  
 Richard Moseley and Joanne Gusweiler  
 Kimberlee S.P. Murphy  
 National Fish and Wildlife Foundation  
 The Native Plant Society of New Jersey  
 The Nature Conservancy  
 New Agency Partners  
 New Jersey Corporate Wetlands Restoration Partnership  
 John T. and Marie Newell  
 Jayne O'Connor  
 Robbyn O'Neill  
 Nelson Obus and Eve Coulson  
 Peter Olsen  
 Oye Olukotun MD and Judith Olukotun

Open Space Institute  
 Outdoor Equity Alliance  
 Mrs. Langdon Palmer  
 Joanne Pannone  
 Tari Pantaleo  
 Eric D. Paternoster  
 The Peck-Bernet Fund  
 David Rago and Suzanne Perrault  
 Ruvani Perumal and Nicholas Gibney  
 Bette Petrell  
 Julia Pettit  
 Teri C. Piancone  
 David Piscitelli  
 Winifred M. and George P. Pitkin Foundation, Inc.  
 Princeton Global Asset Management  
 PSEG  
 Rake & Hoe Garden Club, Inc., of Westfield, NJ  
 Joann and Arlindo S. Ramos  
 Reed Family Foundation, Recommended by L. Keith and Lisa Reed  
 Reed Family Foundation, Recommended by John S. and Leslie V. Reed  
 Archibald and Karen Reid  
 Janice Reid  
 Timothy C. Riegert  
 The Risor Foundation  
 River Branch Foundation  
 The Keith and Patricia Robinson Fund  
 Larry Rockefeller Fund  
 Rebecca Rome  
 Rosemont Foundation  
 Carl Safina  
 Samuel W. and Karen Lambert  
 Dana and Steven Saporta  
 Sarah and Douglas Fleming  
 The Schmidt Family Foundation  
 Leslie and Thomas Schorr  
 James A. & Sharon Schwarz  
 Donor Advised Fund of the Jewish Community Foundation of Greater MetroWest NJ  
 Jeffrey Shafer

Catherine and Andrew Sidamon-Eristoff  
 Silent Maid 1924  
 Peter R. and Abigail E. Sorge  
 John Sowsian  
 Sharon Squicciarino  
 Stark & Stark  
 Austin C. and Ann Starkey  
 State of New Jersey, Division of Disability Services  
 State of New Jersey, Department of Environmental Protection/RGGI  
 Hunt and Margaret Stockwell  
 Stoutsburg Sourland African American Museum  
 William Stusnick  
 Sumner Gerard Foundation  
 Thompson and Susan Swayne  
 Nancy A. Swift  
 Taft Communications  
 Meredith Taylor  
 Teetsel & Jacobs Charitable Fund, a Donor Advised Fund of U.S. Charitable Gift Trust  
 The Odyssey Fund of the Greater Kansas City Community Foundation  
 Pamela Torres  
 Upstream Alliance  
 Leigh Walker and Alice S. Tempel  
 Johanette Wallerstein Institute  
 Elizabeth Walsh  
 Mary A. Walter  
 John and Debra Watson  
 James and Barbara Webb  
 Well Manager, LLC  
 Heidi Wendel  
 Barry Weshnak  
 Charles F. and Carole A. West  
 William Fay  
 The William P. and Gertrude Foundation Inc.

The William Penn Foundation  
 Hannah L. Wilson  
 Susan Wilson  
 Currey Wilson Family Fund  
 Robert W. and Elizabeth S. Wilson  
 Winsor-Delap Family Fund  
 The Bob and Barbara Wolfe Charitable Fund  
 Lawrence J. Zambrowski

## Memorials

(from January 1 - September 30, 2024)

Heidi Cambata  
 Jessie Apple  
 George C. Denzer  
 Bonnie Tillery and Joe Leist  
 Pete Evert  
 Sara Ferguson  
 Eileen Gallagher  
 Jeffrey and Becky Tober  
 Frank Gardner  
 Mark Gardner  
 Frederick P. Gualfetti  
 Loutfi Arabatlian  
 Mariann Cope  
 Jeanne M. D'Angelo  
 Stacey Salamon  
 William "Doc" Holladay  
 Michelle & Doris Bertolino  
 Donna Sexton  
 Andrew Wright  
 Bernard G. Japy  
 Kerri Scriven  
 Cherri Sherman  
 Susan Snider  
 Douglas W. Kath  
 Albert Rauch  
 Larry Keller  
 Merrick G. and Linny Andlinger  
 Richard Ketchel  
 Sara Ferguson  
 Charles Leck  
 Mary Leck

Ellen L. Timko  
 FTI Consulting Team  
 Anna Kelleher and Dan Bodner  
 Navicore Solutions  
 Pete and Leigh Ann Train Charitable Fund

Jim "Rockets" Vellucci  
 Louis Vellucci  
 Robert J. Wolfe  
 The Bob and Barbara Wolfe Charitable Fund

## Tributes

(from January 1 - September 30, 2024)

Richard Bowers  
 Alissa Bowers  
 Deborah Brevoort  
 Chantal Bilodeau  
 Tom Brown Jr.  
 Sharon Sjostrom  
 Michele Byers  
 David L. Hansen and Ruth Charnes  
 Emile DeVito  
 Michael and Marilyn R. Dee  
 Beryl L. Doyle  
 Lois K. Stewart  
 Foxy  
 Michael S. Wills and Agnes M. Toccket  
 Janet Hammond  
 Spencer Hammond  
 Jack Kahrs  
 The Keith and Patricia Robinson Fund  
 Theodore and Janice Stieve  
 Cynthia Kellogg  
 Evelyn Prather  
 Barbara S. McKee  
 Judith Glassgold  
 Betsy J. Schnorr  
 Andrea Rabitz  
 Antonie and Solomon Samuels  
 Eric Schnorr  
 James Vine  
 Catherine Vine



# Welcome Our Newest Trustees

New Jersey Conservation Foundation's Board of Trustees welcomed Patricia Canning and Sean Moriarty.



**PATRICIA CANNING**

**PATRICIA CANNING** is known for creating innovative solutions that integrate people, processes, and technology. Her expertise spans program management, stakeholder engagement, board leadership, and community organizing. During her recent tenure at Deloitte, a leading professional

services firm, she played a key role in establishing its sustainability and climate practice.

As a community organizer and activist, Patricia has garnered numerous awards for her efforts in the South Orange/Maplewood community. Initiatives like the SoNotPlastic environmental campaign — aimed at eradicating single-use plastics — and the MLK Luminary Project — dedicated to Dr. Martin Luther King Jr.'s birthday and promoting racial equity — showcase Patricia's commitment to driving positive change.

**SEAN MORIARTY**, as the most recent past Deputy Commissioner of the New Jersey Department of Environmental Protection, helped lead an agency of more than 3,000 environmental professionals, overseeing the internal legal team, guiding legislative strategy, and overseeing transactions and land acquisition.



**SEAN MORIARTY**

He also developed a cohesive enforcement policy and provided practical and strategic guidance in the development and implementation of key policy initiatives including land use reform, clean energy policy, natural resource protection, Green Acres acquisition, and much more. Sean has acted as a thought leader and policy advocate in public settings and is particularly proud of his role in the development of New Jersey's first-in-the-nation Environmental Justice regulatory program.



“As you look at the natural world in all its variability, connectedness, and diversity, it's just one miracle after another.”

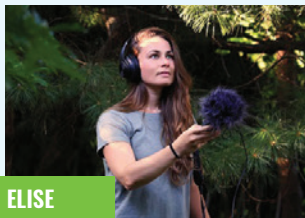
— SCOTT & HELLA MCVAY

NJ Conservation honored Scott and Hella McVay at the annual gala on May 16th at Grounds for Sculpture in Hamilton Township, Mercer County. The McVays, who reside in Princeton, were chosen for their inspiring leadership in conservation, environmental stewardship, and the connection between art and nature.



# Welcome New Staff

New Jersey Conservation Foundation welcomed four new staff members in 2024!



ELISE



ANTHONY



GEO



ANNIE

As Land Protection Coordinator, **ELISE CAVICCHI** collaborates with the Land Acquisition Specialists and Managers to facilitate conservation acquisition projects. She coordinates with stakeholders in the community and assists in the identification and evaluation of potential land projects to meet open space and farmland preservation goals.

**ANTHONY CUCCHI**, Director of Programs, helps to lead the organization's land protection, urban action, and public policy efforts. One of his primary focuses is on ensuring that all New Jersey residents have access to high quality parks and natural areas.

The Development team added **GEO FELLEMA** as Development Manager. Geo oversees donor stewardship, all direct mail and online appeals, and is an integral part of the foundation team, researching funders and drafting grant proposals.

**ANNIE LICATA** joined the Engagement & Communications team as staff writer. She researches and drafts our weekly column, The State We're In, and writes newsletter articles, press releases, and other communications.

To learn more about the new staff members, go to: [www.njconservation.org/staff](http://www.njconservation.org/staff)

## Staff

**Alison Mitchell**, Co-Executive Director

**John S. Watson Jr.**, Co-Executive Director

**Erica Arles**, Land Program & Stewardship Program Coordinator

**Alix Bacon**, Project Manager, Sustainable Agriculture

**Mark Barrick**, Information Technology / Office Manager

**Tim Brill**, Regional Manager Central Jersey

**Rebekah Buczynski**, Project Manager, North Jersey Stewardship

**Elise Cavicchi**, Land Protection Coordinator

**Nicole Ceballos**, Development Associate

**Anthony Cucchi**, Director of Programs

**Beth Davisson**, Highlands & Black River Acquisition Specialist

**Emile DeVito, Ph.D.**, Manager of Science & Stewardship

**Richard Dodds**, Regional Manager, Black River Greenway, Highlands, & Wickecheoke Greenway

**Jessica Fasano**, Communications Manager

**Geo Fellema**, Development Manager

**Robert Ferber**, Regional Manager, Delaware Bay Watershed

**Jane Gardner**, Policy & Development Assistant

**Jane Halsted, CPA**, Accounting Manager

**Amy Hansen**, Policy Manager

**Maria Hauser**, Director Human Resources / Board Liaison

**Jalisa Hernandez**, Urban Parks Coordinator

**Bo Humphrey**, Director of Development & Major Gifts

**Steven Jack**, Land Steward, South Jersey

**Robyn Jeney**, Regional Manager, South Jersey

**Russell Juelg**, Senior Land Steward

**Annie Licata**, Staff Writer

**Bill Lynch, M.S.**, Director of Engagement & Communications

**Lisa MacCollum**, Director, North & Central Jersey

**Melanie Mason**, Land Steward

**Timothy Morris**, Director of Stewardship

**Tanya Nolte**, Conservation Information & GIS Manager

**Rudisha Okezie**, Regional Manager, Camden Area

**Allison Pieffer**, Stewardship Coordinator

**Martin Rapp**, Project Coordinator, North Jersey Stewardship

**Karen Richards, CPA**, Director of Finance & Administration

**Heidi Roldan**, Corporate & Foundation Relations Manager

**Bill Scullion**, Land Steward, South Jersey

You can help protect New Jersey's forests, open spaces, wildlife and communities! Sign up for our Action Network for updates on how you can make a difference.



New Jersey Conservation Foundation is an equal opportunity employer and we are committed to building a diverse workforce and Board of Trustees.





**New Jersey Conservation**  
F O U N D A T I O N

NEW JERSEY CONSERVATION FOUNDATION  
Bamboo Brook | 170 Longview Road | Far Hills, NJ 07931

[www.njconservation.org](http://www.njconservation.org)



### Join Our Email List

We'd like to have your email address so we can keep you updated on New Jersey Conservation Foundation news, program and events.

Please send your email address to [info@njconservation.org](mailto:info@njconservation.org) or call 1-888-LANDSAVE (1-888-526-3728).

## Maximize Your Impact: Become a Sustaining Member

**Monthly giving is the easiest and most efficient way to support land preservation work.**

For as little as \$10 a month you can ensure a steady stream of support to protect forests, farms, and natural lands across New Jersey.

Sign up online at [njconservation.org/donate-now](http://njconservation.org/donate-now) then click "I would like my gift to repeat monthly" or scan the QR code to save land in New Jersey now!



*Red-spotted purple by Bill Lynch*