

# Rainbow Hill at Sourland Mountain Preserve

1,150 acres

Hillsborough & East Amwell, Somerset & Hunterdon Counties, New Jersey

A Somerset County & New Jersey Conservation Foundation Preserve

New Jersey Conservation Foundation, Bamboo Brook, 170 Longview Road, Far Hills, NJ 07931

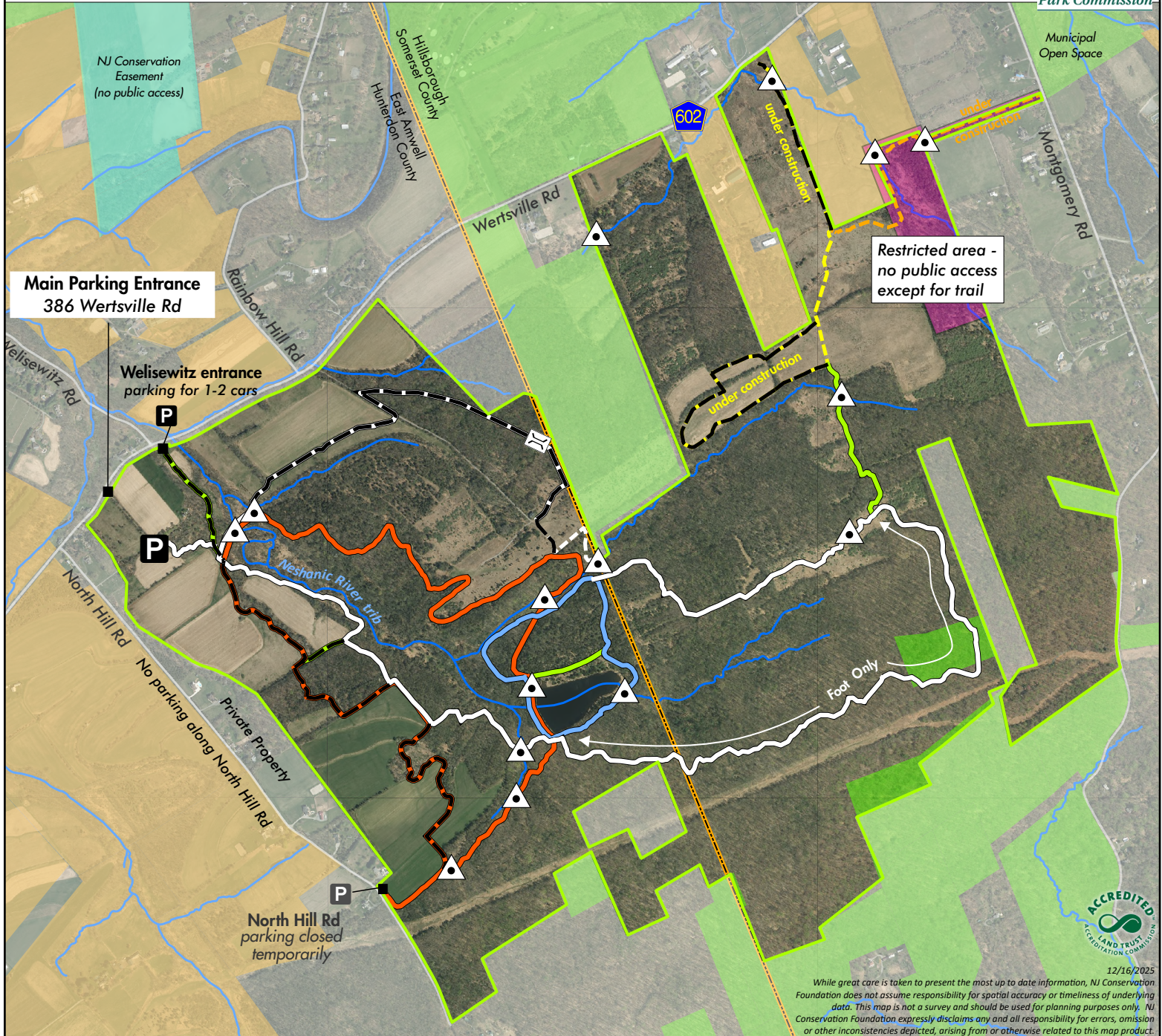
1 (888) LANDSAVE (526-3728) • www.njconservation.org



New Jersey Conservation  
FOUNDATION



Somerset County  
Park Commission



**Main Parking Entrance**  
386 Wertsville Rd

**Welisewitz entrance**  
parking for 1-2 cars

**Restricted area -**  
no public access  
except for trail

## Trails

Trail closed Nov-March

White Trail (4.35 miles)  
plus 0.75 miles under construction

Red Trail (3.25 miles)

Blue Trail (1 mile)

Green Connector Trails

Orange Trail (0.65 miles)  
currently under construction

Yellow Trail (1.4 miles)  
currently under construction

Rock-hop stream crossing

Foot Bridge

River/Stream

Restricted area - no  
public access except  
for trail

Preserve Boundary

Other NJ Conservation Owned/Managed Land

Other Preserved Open Space

Other Preserved Farmland

Road

County/Municipal Boundary

P

Parking



0 1,450 2,900  
Feet



12/16/2025

While great care is taken to present the most up to date information, NJ Conservation Foundation does not assume responsibility for spatial accuracy or timeliness of underlying data. This map is not a survey and should be used for planning purposes only. NJ Conservation Foundation expressly disclaims any and all responsibility for errors, omission or other inconsistencies depicted, arising from or otherwise related to this map product.